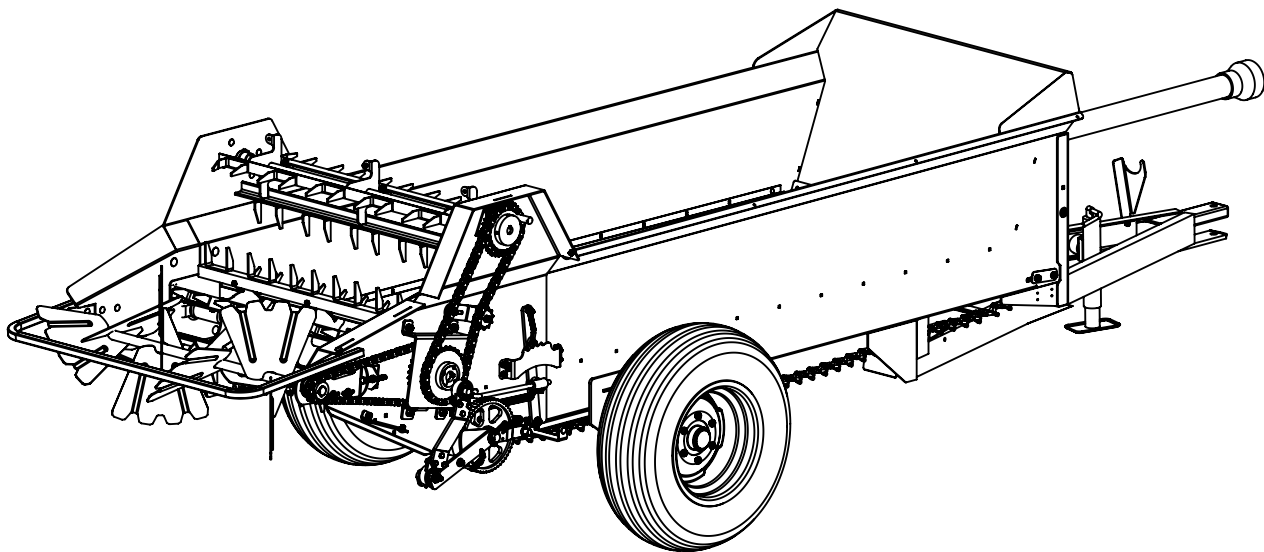


# **ABI ATTACHMENTS**

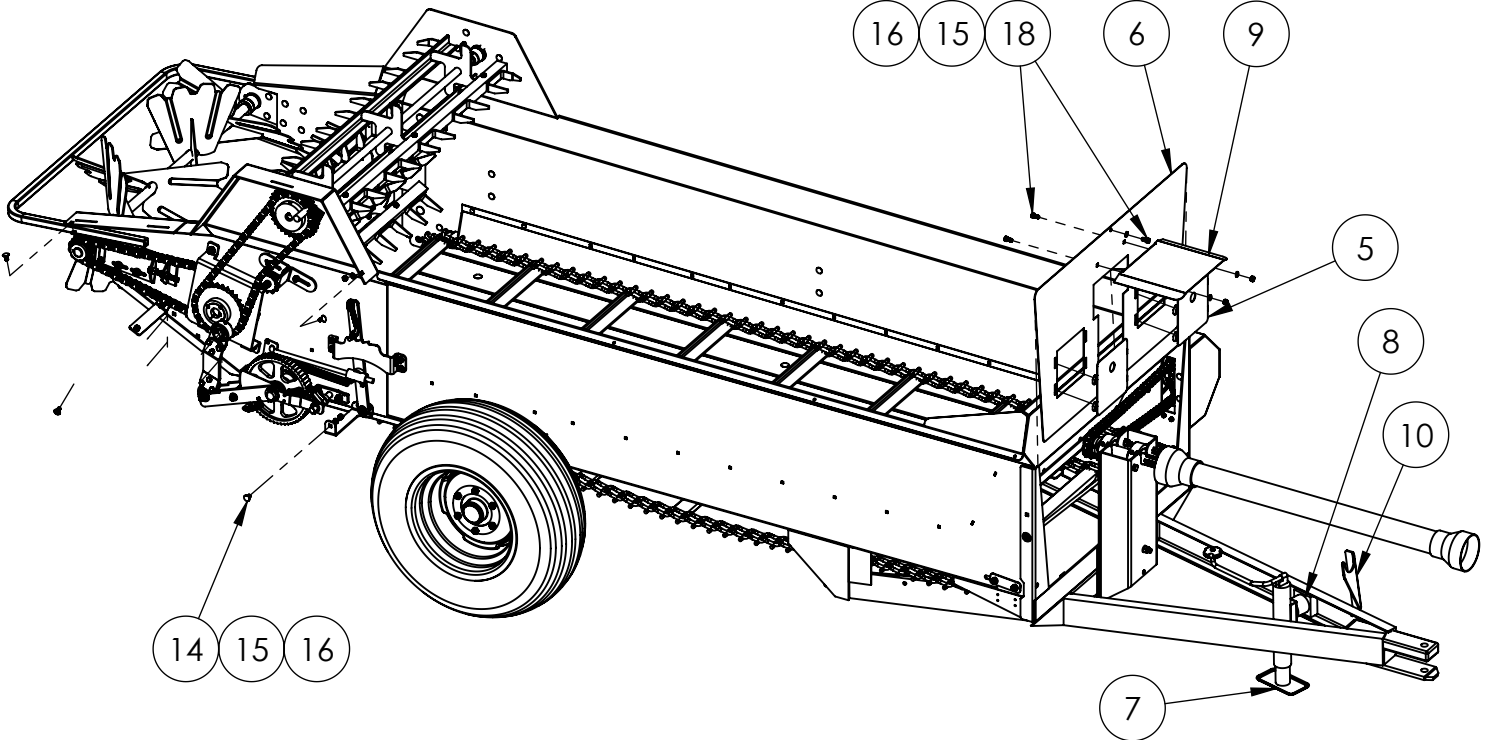
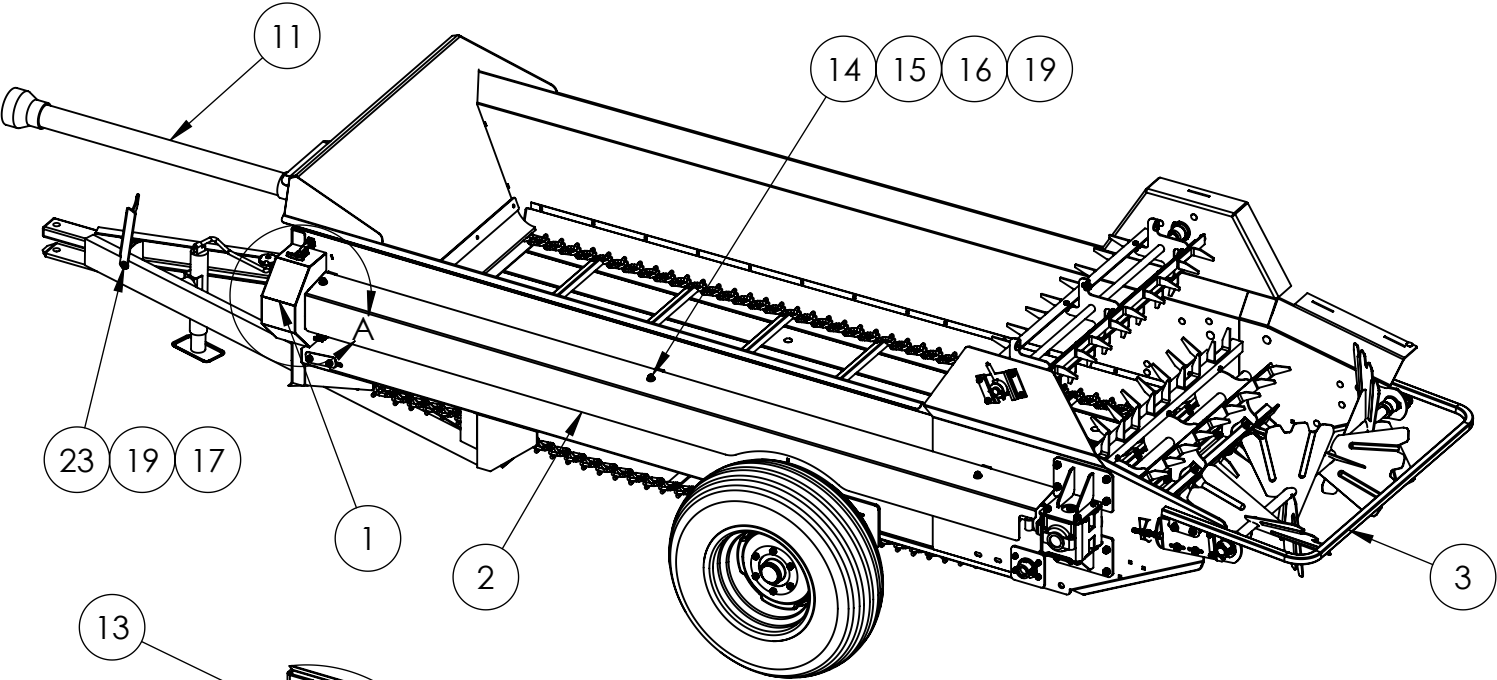
## **85 / 125 / 185 PTO SPREADER**

### **PARTS MANUAL**



**abi**ATTACHMENTS

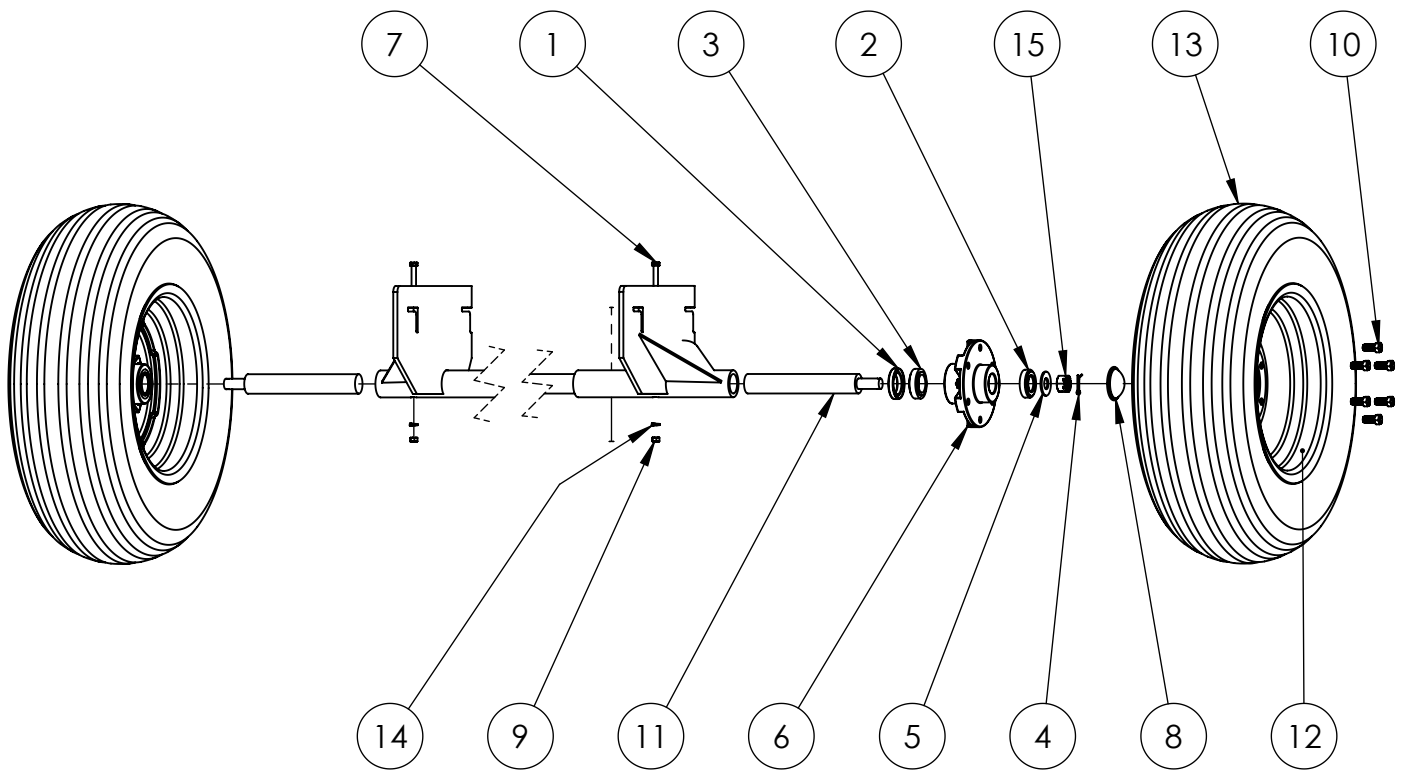
85 / 125 / 185 PTO SHIELDS



### 85 / 125 / 185 PTO SHIELDS

#	85 - Part #	125 - Part #	185 - Part #	Description	QTY:	85	125	185
1	LSP130PSS	LSP130PSS	LSP130PSS	shear bolt sprocket shield	1	1	1	
2	LSP85PS	LSP130PS	LSP130PS	power drive shaft shield	1	1	1	
3	RG85	RG125	RG185	PTO rear guard	1	1	1	
4	LSP85PWCS	LSP130PWCS	LSP185WCS	web drive/chain shield	1	1	1	
5	LSPFS-2	LSPFS-2	LSPFS-2	front shield door	3	3	3	
6	LSP85FS	LSP130FS	LSP185FS	front shield	1	1	1	
7	PBRJ2001	PBRJ2001	PBRJ2001	10" top wind jack	1	1	1	
8	PB500239	PB500239	PB500239	jack mount post	1	1	1	
9	LSP50FS1	LSP50FS1	LSP50FS1	PTO shaft shield	1	1	1	
10	LSPPTOSH	LSPPTOSH	LSPPTOSH	PTO shaft holder	1	1	1	
11	PTOSH2	PTOSH4	PTOSH4	#2 x 48" PTO shaft	1	1	1	
12	HIBUT3B	HIBUT3B	HIBUT3B	shear bolt shield hinge	1	1	1	
13	PBWJ195	PBWJ195	PBWJ195	shear bolt shield latch	1	1	1	
14	CB 375-075	CB 375-075	CB 375-075	3/8 x 3/4" carriage bolt	7	7	7	
15	HN 375	HN 375	HN 375	3/8 hex nut	10	10	10	
16	LW 375	LW 375	LW 375	3/8 lock washer	10	10	10	
17	LN 375	LN 375	LN 375	3/8 lock nut	1	1	1	
18	HB 375-075	HB 375-075	HB 375-075	3/8 x 3/4" hex bolt	3	3	3	
19	FW 375	FW 375	FW 375	3/8 USS washer	5	5	5	
20	HB 250-062	HB 250-062	HB 250-062	1/4 x 5/8" hex bolt	7	7	7	
21	LW 250	LW 250	LW 250	1/4 lock washer	7	7	7	
22	HN 250	HN 250	HN 250	1/4 hex nut	7	7	7	
23	HB 375-125	HB 375-125	HB 375-125	3/8 x 1-1/4" hex bolt	1	1	1	

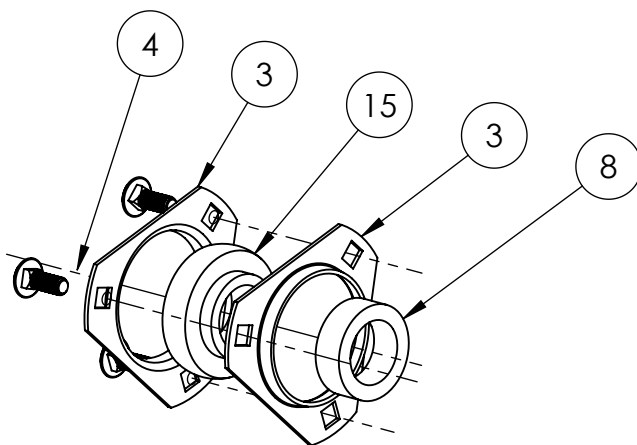
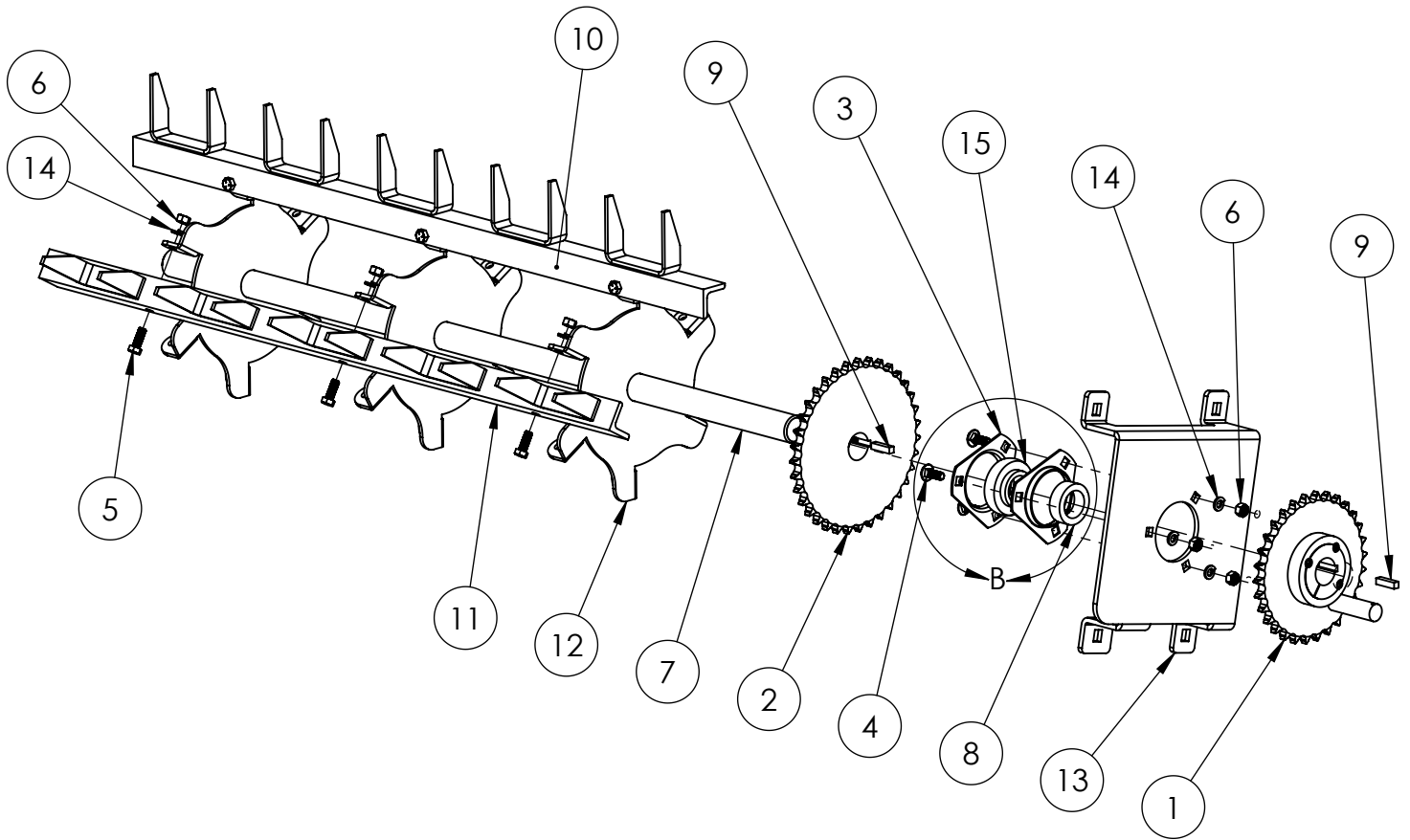
## 85 / 125 / 185 PTO WHEEL AND AXLE ASSEMBLY



### 85 / 125 / 185 PTO WHEEL AND AXLE ASSEMBLY

#	85 - Part #	125 - Part #	185 - Part #	Description	QTY:	85	125	185
1	A16289	A20148	A20148	seal for hub	2	2	2	
2	A67048	A25877	A25877	bearing	2	2	2	
3	A69349	A25590	A25590	large/inside bearing for hub	2	2	2	
4	CP 187-125	CP 187-125	CP 187-125	3/16 x 1-1/4" cotter pin	2	2	2	
5	A875FW	A875FW	A875FW	spindle washer	2	2	2	
6	A888H	A803H	A803H	hub w/ bearing and seal	2	2	2	
7	HB 375-350	HB 375-350	HB 375-350	3/8 x 2-1/2" hex bolt	2	2	2	
8	A888HC	A778HC	A778HC	hub cap	2	2	2	
9	HN 375	HN 375	HN 375	3/8 hex nut	2	2	2	
10	A888BO	A778BO	A778BO	1/2-20 wheel bolt	12	12	12	
11	A888SS	A778SS	A778SS	spindle for hub	2	2	2	
12	W1586W	W1686W	W1686W	15 x 8 6 bolt wheel rim, white	2	2	2	
13	WT11L158	WT12L1612	WT12L1612	11L 15 8 ply tire	2	2	2	
14	LW 375	LW 375	LW 375	3/8 lock washer	2	2	2	
15	A873SN	A873SN	A873SN	spindle nut for hub	2	2	2	

# 85 / 125 / 185 PTO MAIN BEATER ASSEMBLY

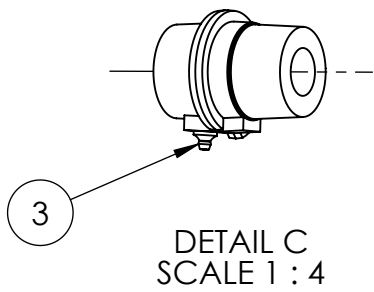
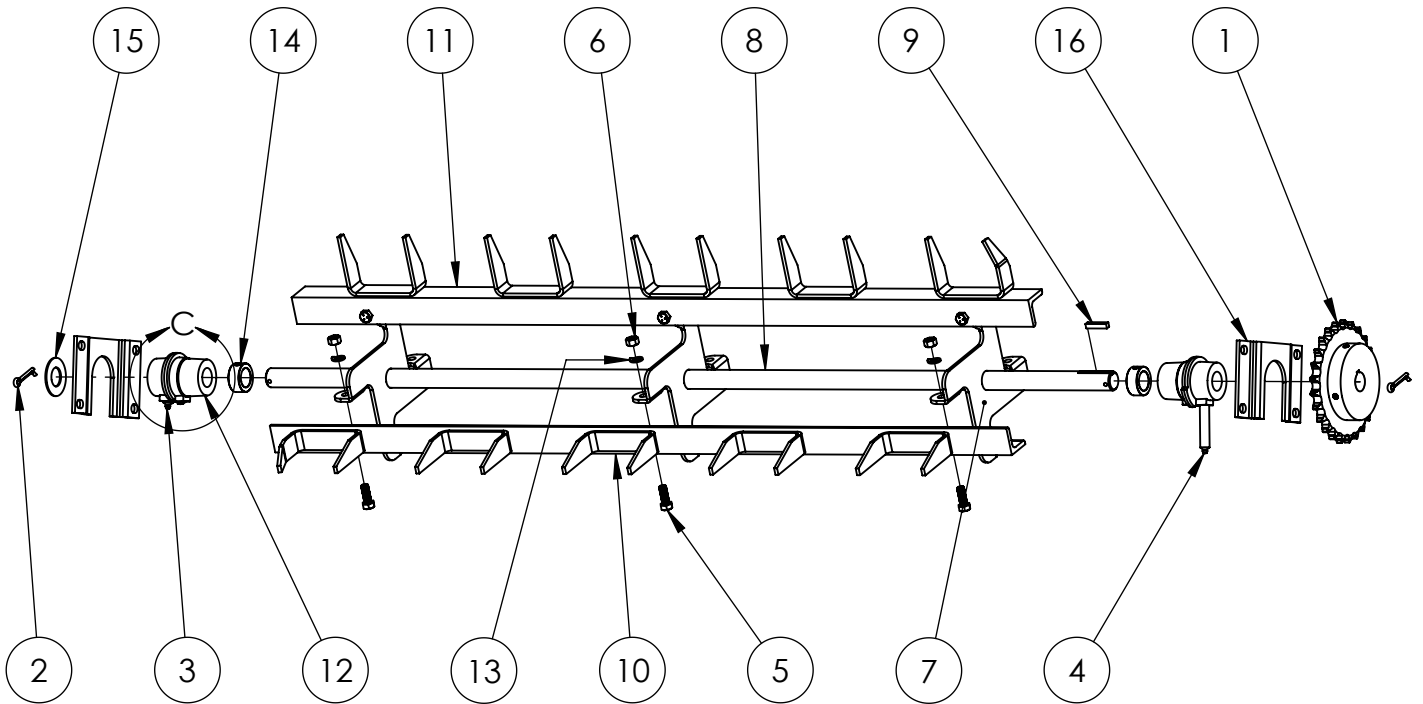


DETAIL B  
SCALE 1 : 4

### 85 / 125 / 185 PTO MAIN BEATER ASSEMBLY

#	85 - Part #	125 - Part #	185 - Part #	Description	QTY:	85	125	185
1	60T30X2012P	60T30X2012P	60T30X2012P	60x30 taper lock sprocket w/ post	1	1	1	
2	60B35X137	60B35X137	60B35X137	60x35 1-3/8" sprocket	1	1	1	
3	BSA207-22F	BSA207-22F	BSA207-22F	flange for 207-22 bearing insert	2	2	2	
4	CB 375-100	CB 375-100	CB 375-100	3/8 x 1" carriage bolt	3	3	3	
5	HB 375-100	HB 375-100	HB 375-100	3/8 x 1" hex bolt	18	18	18	
6	HN 375	HN 375	HN 375	3/8 hex nut	21	21	21	
7	LS85PMBS	LS125MBS	LS185MBS	main beater shaft	1	1	1	
8	LS85PMBS-H	LS125MBS-H	LS185MBS-H	main beater shaft w/ heads	1	1	1	
9	BSA207-22C	BSA207-22C	BSA207-22C	1-3/8 insert bearing collar	1	1	1	
10	KS312-125	KS312-125	KS312-125	5/16 x 1-1/4" key	2	2	2	
11	LB85MBBL	LB125MBBL	LB185MBBL	beater bar, left	3	3	3	
12	LB85MBBR	LB125MBBR	LB185MBBR	beater bar, right	3	3	3	
13	LSP125MCH	LSP125MCH	LSP185MCH	main cylinder head	3	3	3	
14	LSP130MBB	LSP130MBB	LSP130MBB	PTO main beater bearing bracket	1	1	1	
15	LW 375	LW 375	LW 375	3/8 lock washer	21	21	21	

## 85 / 125 / 185 PTO TOP BEATER ASSEMBLY

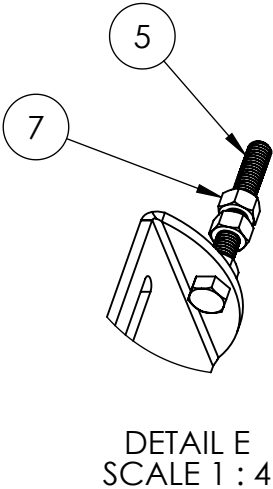
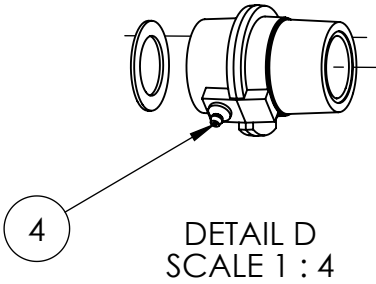
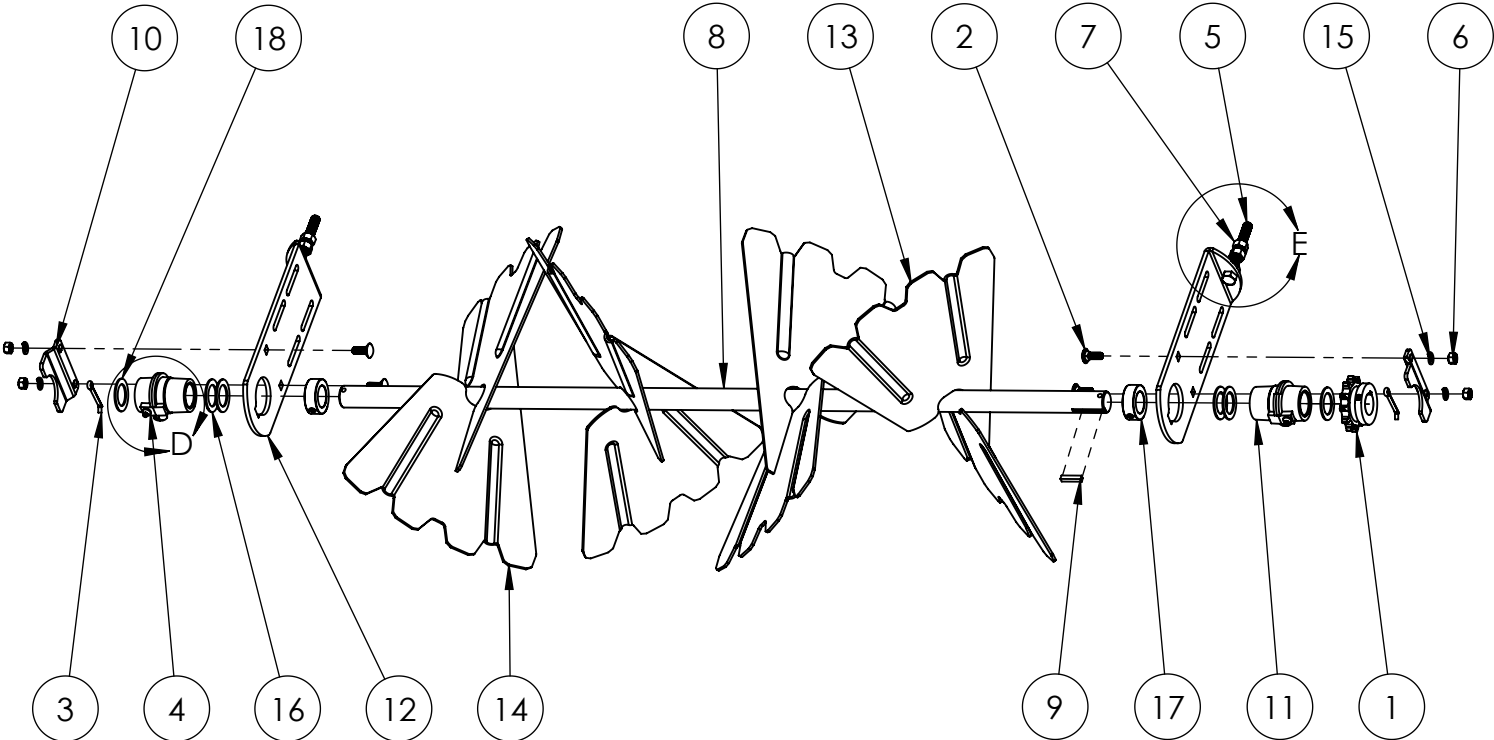




### 85 / 125 / 185 PTO TOP BEATER ASSEMBLY

#	85 - Part #	125 - Part #	185 - Part #	Description	QTY:	85	125	185
1	60B25X100	60B25X100	60B25X100	top beater sprocket	1	1	1	
2	CP-250-150	CP-250-150	CP-250-150	1/4 x 1-1/2" cotter pin	2	2	2	
3	GFH1610	GFH1610	GFH1610	1/8 NPT straight grease fitting	1	1	1	
4	GFH1684	GFH1684	GFH1684	1/8 NPT straight grease fitting, 2-1/4" long	1	1	1	
5	HB 375-100	HB 375-100	HB 375-100	3/8 x 1" hex bolt	12	12	12	
6	HN 375	HN 375	HN 375	3/8 hex nut	12	12	12	
7	LSP185TCH	LSP185TCH	LSP185TCH	top beater head	3	3	3	
8	LS85TBS	LS125TBS	LS185TBS	top beater shaft	1	1	1	
9	LS85TBS-H	LS125TBS-H	LS185TBS-H	top beater shaft w/ heads	1	1	1	
10	KS250-100	KS250-100	KS250-100	1/4 x 1" key	1	1	1	
11	LB85TBBL	LB125TBBL	LB185TBBL	top beater bar, left	2	2	2	
12	LB85TBBR	LB125TBBR	LB185TBBR	top beater bar, right	2	2	2	
13	LC273100	LC273100	LC273100	273 bearing, 1" bore	2	2	2	
14	LW 375	LW 375	LW 375	3/8 lock washer	12	12	12	
15	SC 100	SC 100	SC 100	1" shaft collar	2	2	2	
16	LSP100SW	LSP100SW	LSP100SW	1" shaft cotter pin washer	1	1	1	

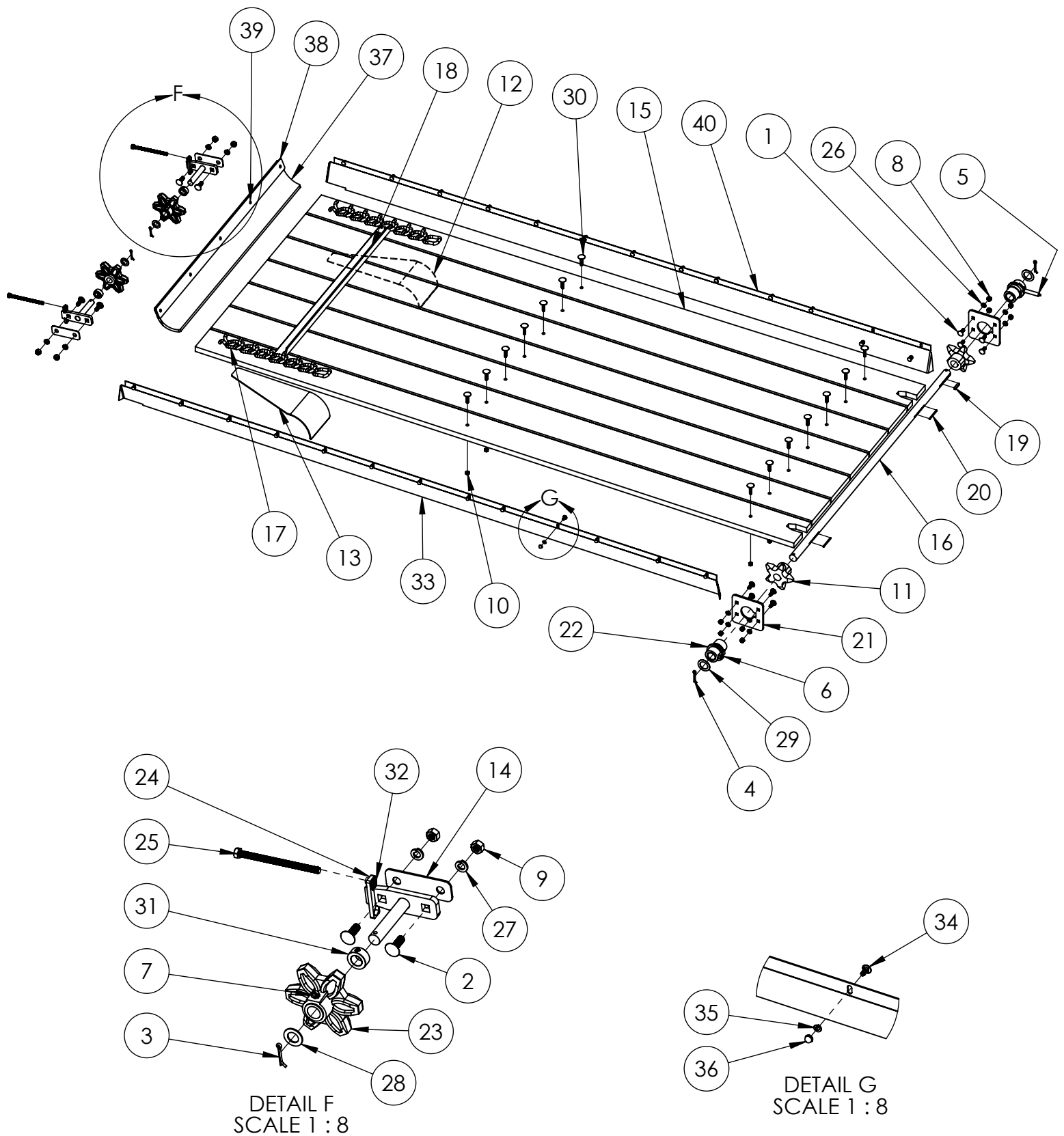
85 / 125 / 185 PTO WIDESPREAD ASSEMBLY



### 85 / 125 / 185 PTO WIDESPREAD ASSEMBLY

#	85 - Part #	125 - Part #	185 - Part #	Description	QTY:	85	125	185
1	60B12X125	60B12X125	60B12X125	widespread sprocket	1	1	1	
2	CB 375-100	CB 375-100	CB 375-100	3/8 x 1" carriage bolt	4	4	4	
3	CP-250-175	CP-250-175	CP-250-175	1/4 x 1-3/4" cotter pin	2	2	2	
4	GFH1610	GFH1610	GFH1610	1/8 NPT straight grease fitting	2	2	2	
5	HBFT 500-400	HBFT 500-400	HBFT 500-400	1/2 x 4" full thread bolt	2	2	2	
6	HN 375	HN 375	HN 375	3/8 hex nut	4	4	4	
7	HN 500	HN 500	HN 500	1/2 hex nut	6	6	6	
8	LS85WSS	LS125WSS	LS185WSS	widespread shaft	1	1	1	
9	LS85WSS-P	LS125WSS-P	LS185WSS-P	widespread shaft w/ paddles	1	1	1	
10	LS85WSS-C	LS125WSS-C	LS185WSS-C	widespread complete	1	1	1	
11	KS250-100	KS250-100	KS250-100	1/4 x 1" key	1	1	1	
12	LSP85WKP	LSP85WKP	LSP85WKP	widespread keeper plate	2	2	2	
13	LC273125	LC273125	LC273125	273 bearing 1-1/4" bore	2	2	2	
14	LSP2000513	LSP2000513	LSP2000513	widespread bearing plate	2	2	2	
15	LSPWSPR	LSPWSPR	LSPWSPR	widespread paddle, right	4	5	6	
16	LSPWSPL	LSPWSPL	LSPWSPL	widespread paddle, left	4	5	6	
17	LW 375	LW 375	LW 375	3/8 lock washer	4	4	4	
18	N14-1250P	N14-1250P	N14-1250P	1-1/4" machine washer	4	4	4	

# 85 / 125 / 185 PTO WEB AND FLOOR ASSEMBLY



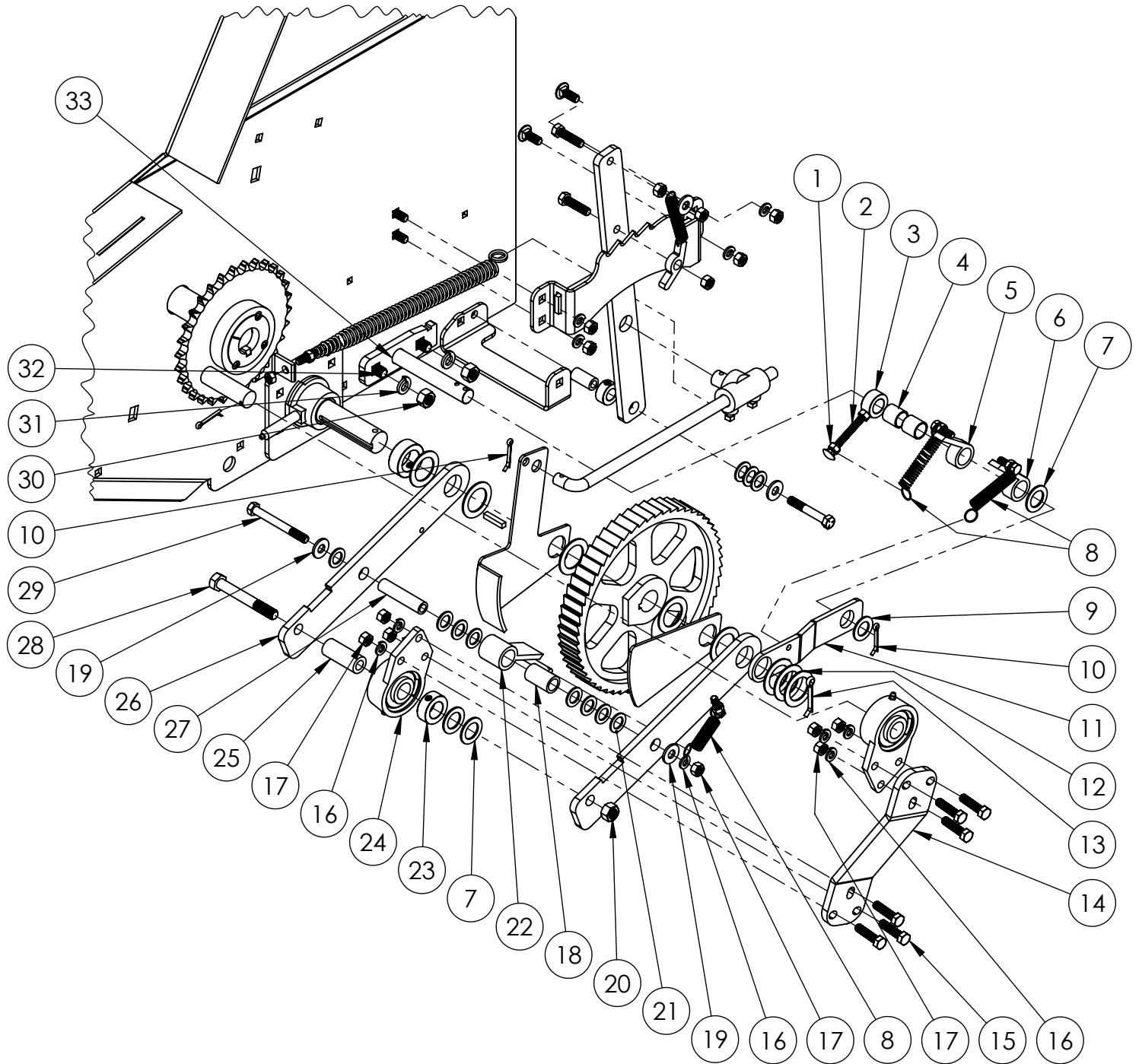
### 85 / 125 / 185 PTO WEB AND FLOOR ASSEMBLY

#	85 - Part #	125 - Part #	185 - Part #	Description	QTY:	85	125	185
1	CB 375-100	CB 375-100	CB 375-100	3/8 x 1" carriage bolt	8	8	8	
2	CB 437-125	CB 437-125	CB 437-125	7/16 x 1-1/4" carriage bolt	4	4	4	
3	CP 187-125	CP 187-125	CP 187-125	3/16 x 1-1/4" cotter pin	2	2	2	
4	CP 250-150	CP 250-150	CP 250-150	1/4 x 1-1/2" cotter pin	2	2	2	
5	GFH82012	GFH82012	GFH82012	12" grease hose	1	1	1	
6	GFH1610	GFH1610	GFH1610	1/8 NPT straight grease fitting	1	1	1	
7	GFH3010	GFH3010	GFH3010	1/4-28 65° grease fitting	2	2	2	
8	HN 375	HN 375	HN 375	3/8 hex nut	8	13		
9	HN 437	HN 437	HN 437	7/16 hex nut	4	4	4	
10	HN 312	HN 312	HN 312	5/16 hex nut	16	16	16	
11	LC315112	LC315112	LC315112	web drive sprocket, 1-1/8"	2	2	2	
12	LSP100WSR	LSP100WSR	LSP100WSR	web slide right	1	1	1	
13	LSP100WSL	LSP100WSL	LSP100WSL	web slide left	1	1	1	
14	LSPWIP	LSPWIP	LSPWIP	web idler plate	2	2	2	
15	PF85	PF125	PF125	3/4 x 6 x 99 poly floor board	7	8	8	
16	LS85PWDS	LS125WDS	LS125WDS	PTO web drive shaft	1	1	1	
17	TRP437	TRZ437	TRZ437	7/16 painted tee rod link	180	198		
18	TS85	TS125	TS185	web slat	12	14		
19	KS250-100	KS250-100	KS250-100	1/4 x 1" key	1	1	1	
20	KS250-150	KS250-150	KS250-150	1/4 x 1-1/2" key	2	2	2	
21	LSP125WBP	LSP125WBP	LSP125WBP	web bearing plate	2	2	2	
22	LC273112	LC273112	LC273112	1-1/8" bearing w/ bronze insert	2	2	2	
23	LC313275	LC313275	LC313275	6T web idler sprocket, 3/4" bore	2	2	2	
24	LSPWIB	LSPWIB	LSPWIB	web idler bracket	2	2	2	
24A	LSPWIB-C	LSPWIB-C	LSPWIB-C	web idler/complete assembly	2	2	2	

### 85 / 125 / 185 PTO WEB AND FLOOR ASSEMBLY CONTINUED

#	85 - Part #	125 - Part #	185 - Part #	Description	QTY:	85	125	185
25	HBFT 375-500	HBFT 375-500	HBFT 375-500	3/8 x 5” full thread hex bolt	2	2	2	
26	LW 375	LW 375	LW 375	3/8 lock washer	8	8	8	
27	LW 437	LW 437	LW 437	7/16 lock washer	4	4	4	
28	N14-0750P	N14-0750P	N14-0750P	3/4 machine washer	2	2	2	
29	N14-1125P	N14-1125P	N14-1125P	1-1/8 machine washer	2	2	2	
30	SB 312-150	SB 312-150	SB 312-150	5/16 x 1-1/2” step bolt	16	16	16	
31	SC 075	SC 075	SC 075	3/4” shaft collar	2	2	2	
32	SFN 375	SFN 375	SFN 375	3/8 serrated flange nut	2	2	2	
33	LSP80FCPL	LSP130FCPL	LSP130FCPL	floor corner panel, left	1	1	1	
34	CB 250-062	CB 250-062	CB 250-062	1/4 x 5/8” carriage bolt	26	26	26	
35	LW 250	LW 250	LW 250	1/4 lock washer	26	26	26	
36	HNA 250	HNA 250	HNA 250	1/4 acorn nut	26	26	26	
37	RF 85	RF 125	RF 185	front rubber flap	1	1	1	
38	LSP80FR	LSP110FR	LS185FR	rubber holder	1	1	1	
39	HB 375-100	HB 375-100	HB 375-100	3/8 x 1” hex bolt	5	5	5	
40	LSP80FCPR	LSP130FCPR	LSP130FCPR	floor corner panel, right	1	1	1	

# 85 / 125 / 185 PTO WEB DRIVE ASSEMBLY PART 1



### 85 / 125 / 185 PTO WEB DRIVE ASSEMBLY PART 1

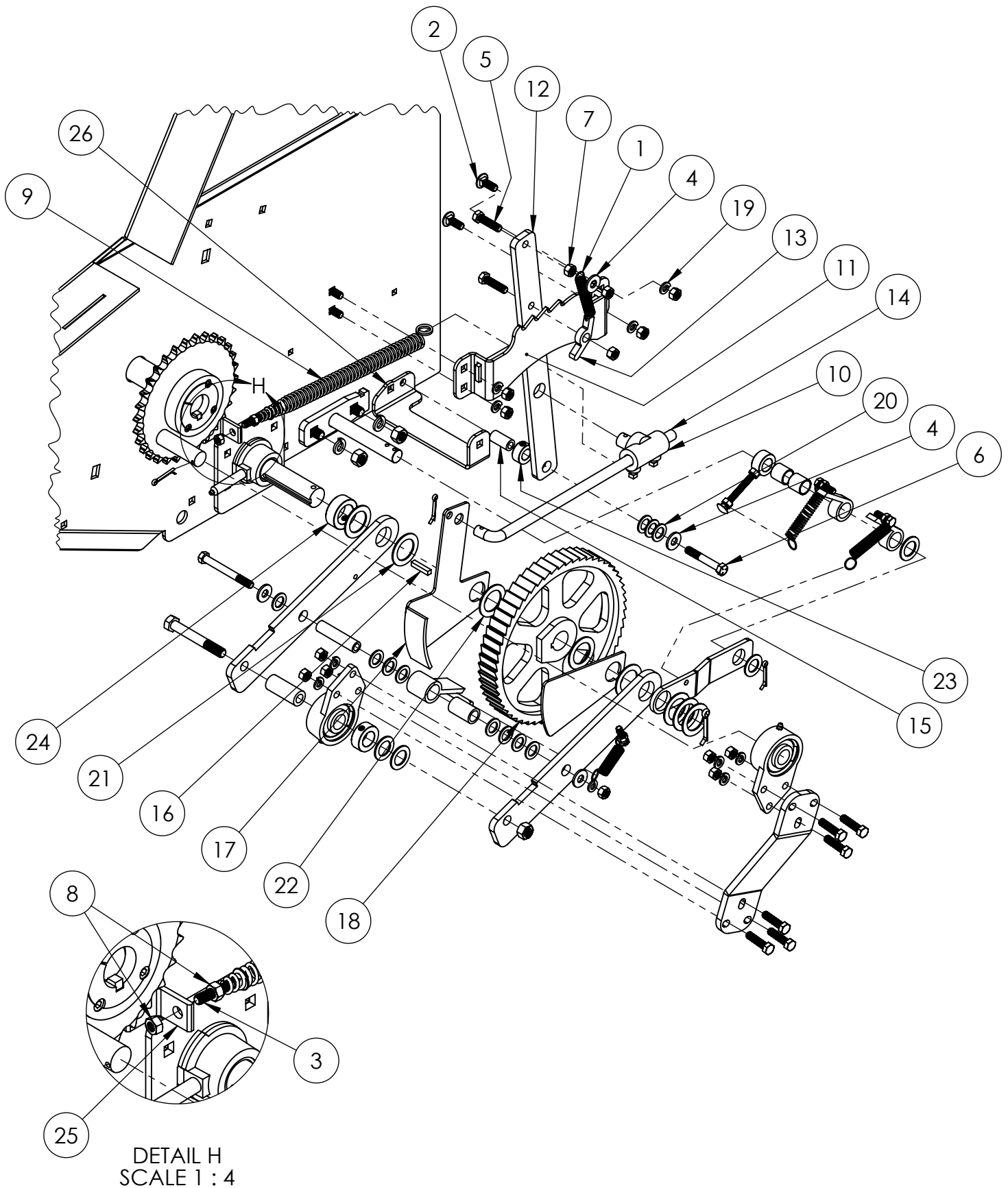
#	85 - Part #	125 - Part #	185 - Part #	Description	QTY:	85	125	185
1	HN 312	HN 313	HN 313	5/16 hex nut	5	5	5	
2	CB 313-300	CB 313-300	CB 313-300	5/16 x 3" carriage bolt	1	1	1	
3	SC 075	SC 075	SC 075	3/4" shaft collar	1	1	1	
4	BB838-06	BB838-06	BB838-06	3/4 x 7/8 x 7/8" bronze bushing	2	2	2	
5	WP125RS	WP125RS	WP125RS	retaining pawl, short	1	1	1	
6	WP125RL	WP125RL	WP125RL	retaining pawl, long	1	1	1	
7	N14-0875P	N14-0875P	N14-0875P	7/8 machine washer	3	3	3	
8	SL1439	SL1439	SL1439	web pawl spring	4	4	4	
9	N14-0750P	N14-0750P	N14-0750P	3/4 machine washer	1	1	1	
10	CP 187-125	CP 187-125	CP 187-125	3/16 x 1-1/4" cotter pin	3	3	3	
11	LSP130WDS	LSP130WDS	LSP130WDS	web shaft support	1	1	1	
12	N14-1125P	N14-1125P	N14-1125P	1-1/8 machine washer	7	7	7	
13	CP 250-150	CP 250-150	CP 250-150	1/4 x 1-1/2" cotter pin	1	1	1	
14	LSP130WDPA	LSP130WDPA	LSP130WDPA	PTO web push arm	1	1	1	
15	HB 375-125	HB 375-125	HB 375-125	3/8 x 1-1/4" hex bolt	6	6	6	
16	LW 375	LW 375	LW 375	3/8 lock washer	12	12	12	
17	HN 375	HN 375	HN 375	3/8 hex nut	15	15	15	
18	BB832-05	BB832-05	BB832-05	5/8 x 7/8 x 1-1/2" bronze bushing	1	1	1	
19	FW 375	FW 375	FW 375	3/8 flat washer	4	4	4	
20	LN 500	LN 500	LN 500	1/2 lock nut	1	1	1	
21	N14-0625P	N14-0625P	N14-0625P	5/8 machine washer	11	11	11	
22	WP125D	WP125D	WP125D	web drive pawl	1	1	1	
23	SC 087	SC 087	SC 087	7/8" shaft collar	1	1	1	
24	BUCFB205-14	BUCFB205-14	BUCFB205-14	3 bolt flange bearing	2	2	2	
25	SB1278218	SB1278218	SB1278218	1/2 x 7/8 x 2-1/8" steel bushing	1	1	1	
26	LSP130RSA	LSP130RSA	LSP130RSA	PTO web pawl arm	2	2	2	



### 85 / 125 / 185 PTO WEB DRIVE ASSEMBLY PART 1 CONTINUED

#	85 - Part #	125 - Part #	185 - Part #	Description	QTY:	85	125	185
27	SB3858278	SB3858378	SB3858378	3/8 x 5/8 x 2-7/8" steel bushing	1	1	1	
28	HB 500-375	HB 500-375	HB 500-375	1/2 x 3-3/4" hex bolt	1	1	1	
29	HB 375-350	HB 375-350	HB 375-350	3/8 x 3-1/2" hex bolt	1	1	1	
30	HN 500	HN 500	HN 500	1/2 hex nut	2	2	2	
31	LW 500	LW 500	LW 500	1/2 lock washer	2	2	2	
32	CB 500-125	CB 500-125	CB 500-125	1/2 x 1-1/4" carriage bolt	2	2	2	
33	WP125RB	WP125RB	WP185RB	retaining pawl bracket	1	1	1	

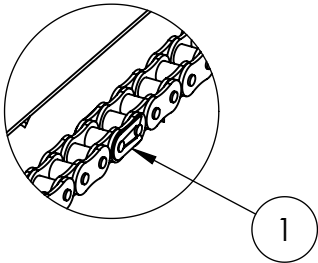
# 85 / 125 / 185 PTO WEB DRIVE ASSEMBLY PART 2



### 85 / 125 / 185 PTO WEB DRIVE ASSEMBLY PART 2

#	85 - Part #	125 - Part #	185 - Part #	Description	QTY:	85	125	185
1	SL1439	SL1439	SL1439	5/16 hex nut	4	4	4	
2	CB 375-100	CB 375-100	CB 375-100	5/16 x 3" carriage bolt	5	5	5	
3	CB 313-200	CB 313-200	CB 313-200	3/4" shaft collar	1	1	1	
4	FW 375	FW 375	FW 375	3/4 x 7/8 x 7/8" bronze bushing	4	4	4	
5	HB 375-150	HB 375-150	HB 375-150	retaining pawl, short	2	2	2	
6	HB 375-250	HB 375-250	HB 375-250	retaining pawl, long	1	1	1	
7	HN 375	HN 375	HN 375	7/8 machine washer	15	15	15	
8	HN 313	HN 313	HN 313	web pawl spring	5	5	5	
9	SLS955	SLS955	SLS955	3/4 machine washer	1	1	1	
10	LC8C3	LC8C3	LC8C3	3/16 x 1-1/4" cotter pin	1	1	1	
11	LSP125FC	LSP125FC	LSP125FC	web shaft support	1	1	1	
12	LSP50RCF	LSP50RCF	LSP50RCF	1-1/8 machine washer	1	1	1	
13	LSP50RCF1	LSP50RCF1	LSP50RCF1	1/4 x 1-1/2" cotter pin	1	1	1	
14	LR5615	LR5615	LR5615	PTO web push arm	1	1	1	
15	SB3858125	SB3858125	SB3858125	3/8 x 1-1/4" hex bolt	1	1	1	
16	KS 250-100	KS 250-100	KS 250-100	3/8 lock washer	1	1	1	
17	LSP130WDA	LSP130WDA	LSP130WDA	3/8 hex nut	1	1	1	
18	LC195R12	LC195R12	LC195R12	5/8 x 7/8 x 1-1/2" bronze bushing	1	1	1	
19	LW 375	LW 375	LW 375	3/8 flat washer	12	12	12	
20	N14-0625P	N14-0625P	N14-0625P	1/2 lock nut	11	11	11	
21	N14-1125P	N14-1125P	N14-1125P	5/8 machine washer	7	7	7	
22	N14-1250P	N14-1250P	N14-1250P	web drive pawl	2	2	2	
23	SC 062	SC 062	SC 062	7/8" shaft collar	1	1	1	
24	SC 112	SC 112	SC 112	3 bolt flange bearing	1	1	1	
25	SM85	SM85	SM85	1/2 x 7/8 x 2-1/8" steel bushing	1	1	1	
26	LSP85CS1	LSP85CS1		shield bracket	1	1	1	

## 85 / 125 / 185 PTO ADAPTER SHAFT ASSEMBLY

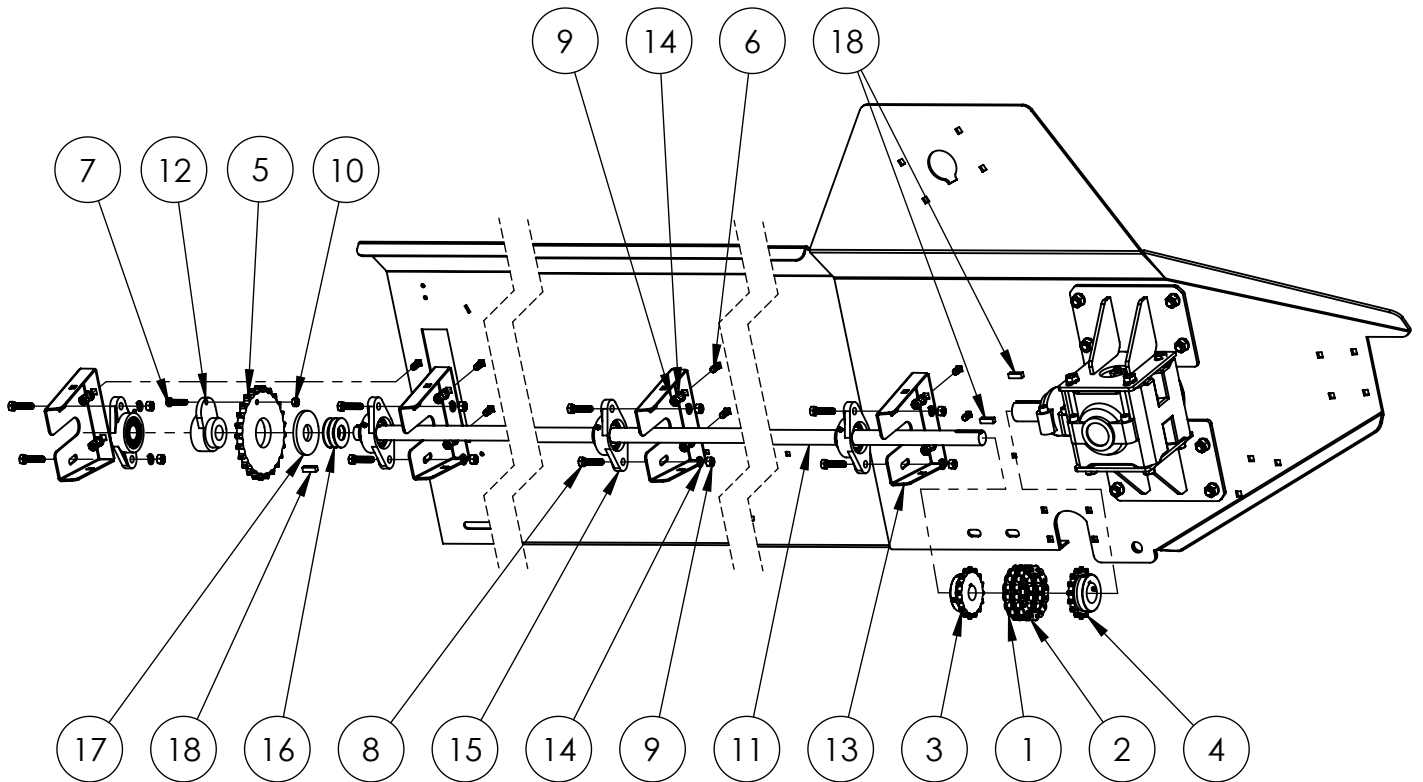


DETAIL J  
SCALE 1 : 4

### 85 / 125 / 185 PTO ADAPTER SHAFT ASSEMBLY

#	85 - Part #	125 - Part #	185 - Part #	Description	QTY:	85	125	185
1	RC60HCO	RC60HCO		#60 heavy connecting link		1	1	
2	60B12X125	60B12X125		#60 12T 1-1/4" bore sprocket		1	1	
3	KS250-100	KS250-100		1/4 x 1" key		1	1	
4	RC60H61	RC60H67		125P main drive chain		1	1	
5	FW 500	FW 500		1/2 flat washer		1	1	
6	FW 437	FW 437		7/16 flat washer		1	1	
7	HB 500-600	HB 500-600		1/2 x 6" bolt		1	1	
8	HB 500-175	HB 500-175		1/2 x 1-3/4" bolt		5	5	
9	BSAFL207-22	BSAFL207-22		1-3/8 2 bolt flange bearing		2	2	
10	HN 437	HN 438		7/16 hex nut		1	1	
11	HN 500	HN 500		1/2 hex nut		6	6	
12	LS121146	LS121146		1-3/8" 6 spline shaft		1	1	
13	LSP130PB	LSP130PB		PTO bracket		1	1	
14	LW 500	LW 500		1/2 lock washer		6	6	
15	TR71622	TR71626		125P drive chain tightener rod		1	1	

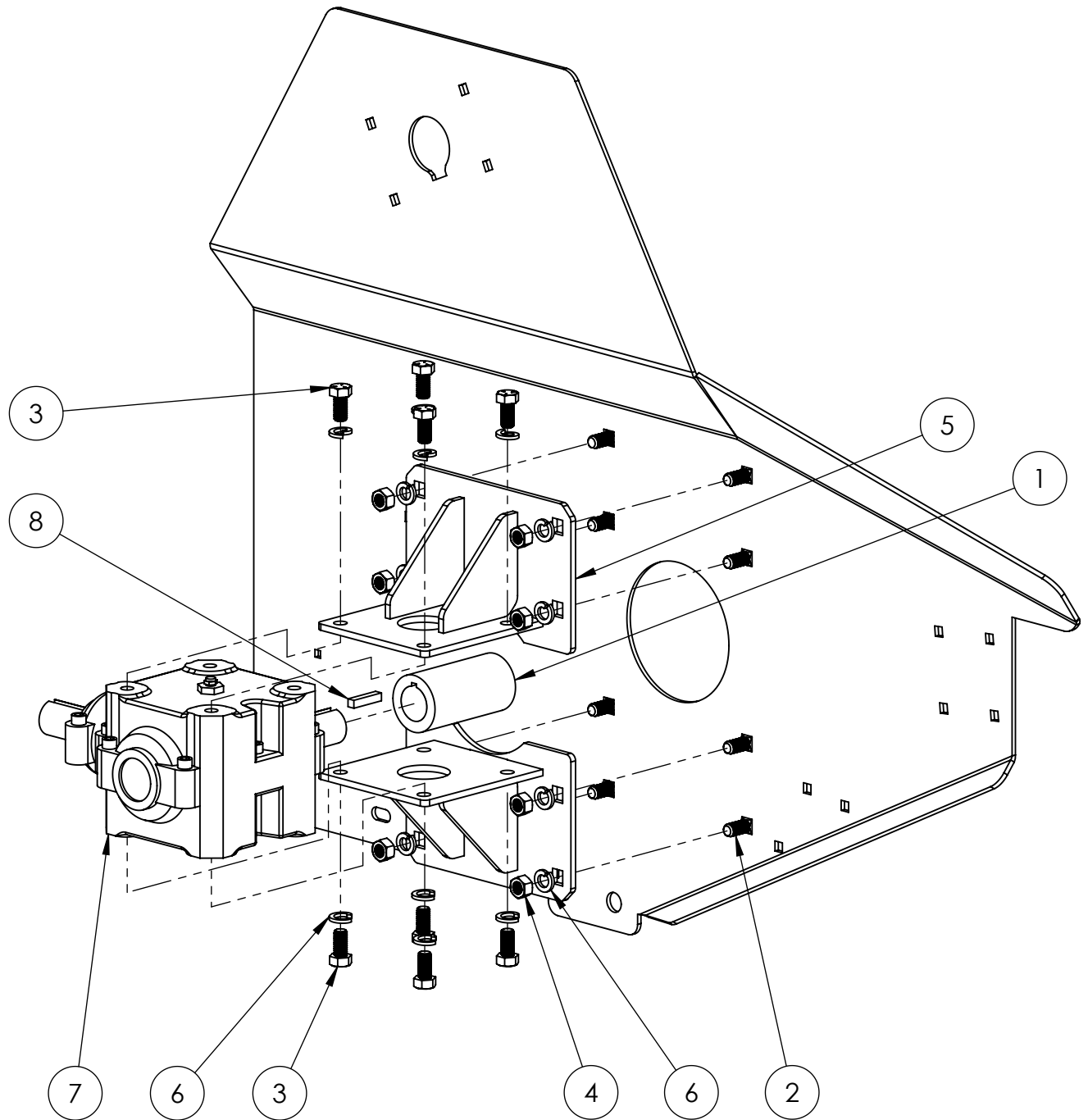
## 85 / 125 / 185 PTO POWER DRIVE SHAFT ASSEMBLY



### 85 / 125 / 185 PTO POWER DRIVE SHAFT ASSEMBLY

#	85 - Part #	125 - Part #	185 - Part #	Description	QTY:	85	125	185
1	RC5216	RC5216		#50 coupling chain		1	1	
2	RC52CO	RC52CO		#50-2 connecting link		1	1	
3	50B16X100	50B16X100		#50x16 1" coupling sprocket		1	1	
4	50B16X137	50B16X137		#50x16 1-3/8" coupling sprocket		1	1	
5	60X25S	60X25S		PTO shear pin sprocket		1	1	
6	CB 375-100	CB 375-100		3/8 x 1" carriage bolt		8	8	
7	SP 313-125	SP 313-125		5/16 x 1-1/4" GR2 shear pin bolt		1	1	
8	HB 375-125	HB 375-125		3/8 x 1-1/4" hex bolt		8	8	
9	HN 375	HN 375		3/8" hex nut		16	16	
10	LN 313	LN 313		5/16 lock nut		1	1	
11	LS85PDS	LS125PDS		power drive shaft		1	1	
12	100XSH85	100XSH85		PTO shear pin hub		1	1	
13	LSP130BB	LSP130BB		bearing bracket		4	4	
14	LW 375	LW 375		3/8 lock washer		16	16	
15	BSAFL205-16	BSAFL205-16		1" 2 bolt flange bearing		4	4	
16	W14-1000P	W14-1000P		1" wide flange machine washer		3	3	
17	LSP85PSPW	LSP85PSPW		shear pin washer		1	1	
18	KS312-100	KS312-100		5/16 x 1" key stock		3	3	

## 85 / 125 / 185 PTO GEARBOX ASSEMBLY

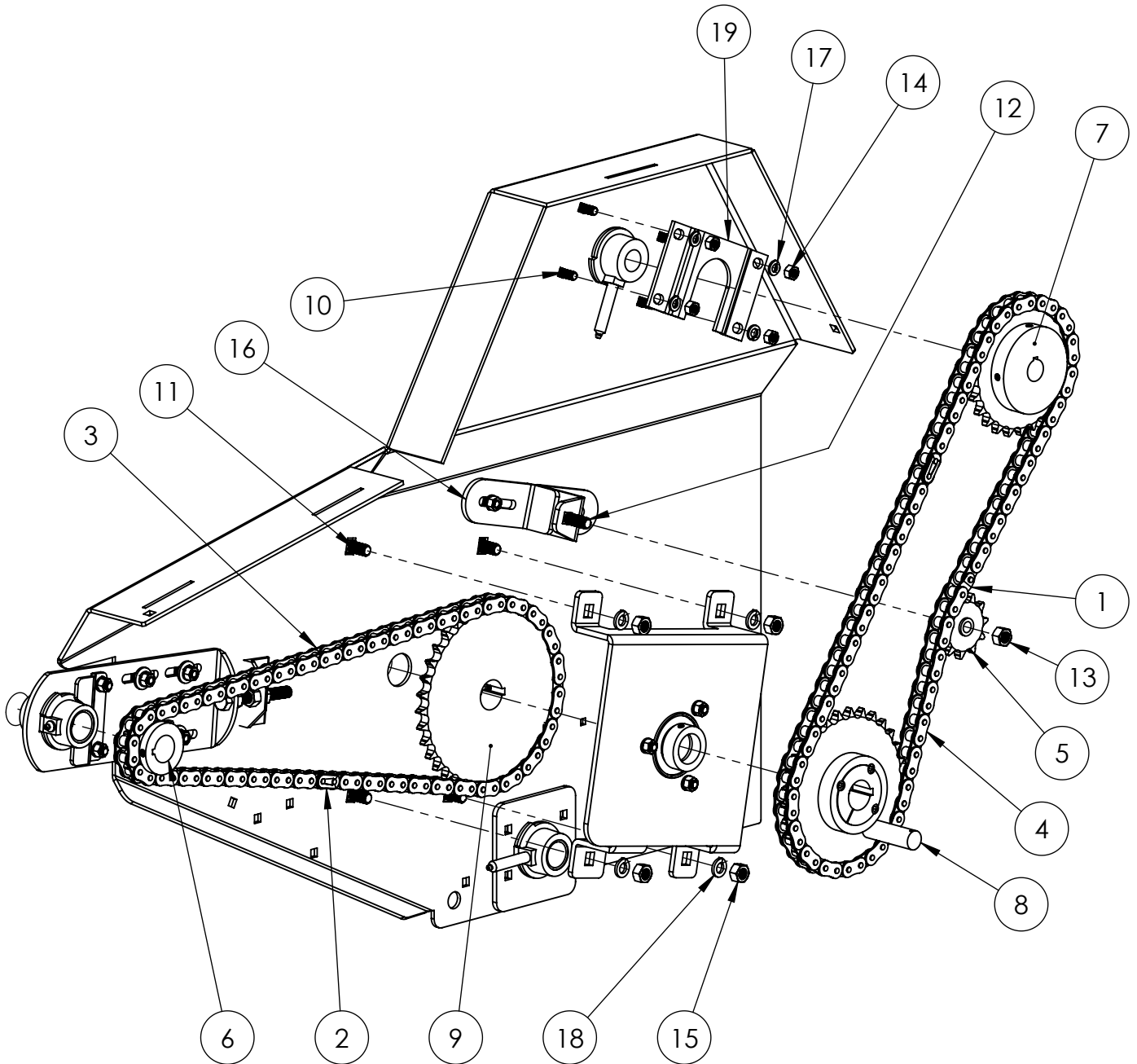




### 85 / 125 / 185 PTO GEARBOX ASSEMBLY

#	85 - Part #	125 - Part #	185 - Part #	Description	QTY:	85	125	185
1	FSC137	FSC137	FSC137	1-3/8 split shaft coupler	1	1	1	
2	CB 500-125	CB 500-125	CB 500-125	1/2 x 1-1/4" carriage bolt	8	8	8	
3	HB 500-125	HB 500-125	HB 500-125	1/2 x 1-1/4" hex bolt	8	8	8	
4	HN 500	HN 500	HN 500	1/2 hex nut	8	8	8	
5	LSP130GB	LSP130GB	LSP130GB	gearbox mounting bracket	2	2	2	
6	LW 500	LW 500	LW 500	1/2 lock washer	16	16	16	
7	GBR500-9CSA	GBR500-9CSA	GBR500-9CSA	85P/125P/185P gearbox	1	1	1	
8	KS312-150	KS312-150	KS312-150	5/16 x 1-1/2" key	1	1	1	

## 85 / 125 / 185 PTO BEATER DRIVE ASSEMBLY



### 85 / 125 / 185 PTO BEATER DRIVE ASSEMBLY

#	85 - Part #	125 - Part #	185 - Part #	Description	QTY:	85	125	185
1	RC60OF	RC60OF		#60 offset link		1	1	
2	RC60CO	RC60CO		#60 connecting link		2	2	
3	RC6061	RC6058		85 wide spread chain, 61.5" long		1	1	
4	RC6061H	RC6063		85 top beater chain, 61.5" + half link		1	1	
5	60BB11X50	60BB11X50		#60 idler sprocket		1	1	
6	60B12X125	60B12X125		#60 12 tooth 1-1/4" sprocket		1	1	
7	60B25X100	60B25X100		top beater sprocket		1	1	
8	60T30X2012P	60T30X2012P		#60x30T taper lock sprocket w/ post		1	1	
9	60B35X137	60B35X137		#60 35 tooth 1-3/8" sprocket		1	1	
10	CB 375-100	CB 375-100		3/8 x 1" carriage bolt		4	4	
11	CB 500-125	CB 500-125		1/2 x 1-1/4" carriage bolt		4	4	
12	CB 500-150	CB 500-150		1/2 x 1-1/2" carriage bolt		1	1	
13	LN 500	LN 500		1/2 lock nut		1	1	
14	HN 375	HN 375		3/8 hex nut		4	4	
15	HN 500	HN 500		1/2 hex nut		7	7	
16	LSP80CIB	LSP80CIB		top beater chain idler bracket		1	1	
17	LW 375	LW 375		3/8 lock washer		4	4	
18	LW 500	LW 500		1/2 lock washer		4	4	
19	LSP110KP	LSP110KP		top beater bearing keeper plate		2	2	