



48" & 72" CULTIPACKER ATTACHMENT



PLEASE READ FULLY AND UNDERSTAND BEFORE OPERATING TOOL!

Version 1.0.1

Thank You,

On behalf of the ABI family we would like to thank you for your recent purchase of your ABI 48"/72" Cultipacker. Our Company's goal is to provide our customers with innovative, quality tools as well as first rate customer service.

These instructions are designed to help you, the customer, get your new Cultipacker out of the shipping crate and into use. Once you have put your Cultipacker to work, if you have any further questions, please feel free to call and talk with one of our friendly and knowledgeable Customer Service Staff. To contact our Customer Service Department call 855-211-0598, M-TH 8am-8pm EST and Friday 8am-5pm EST.

For ordering parts for the ABI Cultipacker please contact our Customer Support Department by phone at: 855-211-0598 M-Th 8am-8pm EST and Friday 8am-5pm EST.

Specifications –

Width	48"	72"
Pull Type	Standard	Standard
Wheel Kit	Optional	Optional
3 Point Kit (CAT I Only)	Optional	Optional
Packer Wheels	21 Cast Iron Wheels with Crushing Knobs (Agricultural Quality)	32 Cast Iron Wheels with Crushing Knobs (Agricultural Quality)
Packer Wheel Size	9.5" Dia.	9.5" Dia.
Packer Wheel Bearings	Greaseable 1-3/4" Pillow Block (Agricultural Quality)	Greaseable 1-3/4" Pillow Block (Agricultural Quality)
Tongue Hitch Method	Quick Remove Pin	Quick Remove Pin
Weight	257 lbs Standard / 272 lbs w/ Wheel Kits	384 lbs Standard / 398 lbs w/ Wheel Kits

Safety Information –

Operator safety is important to ABI. To help the operator make informed decisions about safety and use, we have provided operating procedures and other information for the operator in this manual. The information in this section is to alert the operator to potential hazards that could cause harm to the operator or others.

Important safety information are listed as follows:



- Each safety symbol will then be followed by one of three signal words: DANGER, WARNING, or CAUTION.



DANGER : Indicates an imminently hazardous situation that, if not avoided; will result in death or serious injury to the operator. This signal word is to be limited to the most extreme situations typically for machine components which, for functional purposes; cannot be guarded.



WARNING: Indicates a potentially hazardous situation that, if not avoided; could result in death or serious injury, and includes hazards that are exposed when guards are removed. It may also be used to alert the operator against unsafe practices.



CAUTION: Indicates a potentially hazardous situation that, if not avoided; may result in minor or moderate injury. It may also be used to alert the operator against any unsafe operating procedures.

Important Safety Information:



CAUTION: DO NOT ALLOW anyone to operate this equipment if they have not fully read and understand the safety manual, and who has not been properly trained in the safe operation of the equipment.



CAUTION: Operator should be familiar with all the functions of the unit.



WARNING: Keep all bystanders clear of equipment while in operation.



DANGER: Never allow anyone to ride on the equipment while in operation.



CAUTION: Safely support and secure equipment before making any repairs.



CAUTION: Do not stand or climb on equipment.



CAUTION: Never back up a tow vehicle with the ABI Cultipacker attached to the tow vehicle.

This manual is filled with important safety information. Please read it carefully!

Setup/Assembly Instructions –

Items Received:

1- 48"/72" Cultipacker

Optional Items:

1 – Cultipacker Wheel Kit

1 – Cultipacker 3-Point Kit

Tools needed:

Pry Bar/Crow Bar

15/16" Combination wrench and socket (optional for Wheel Kit)

3/4" Combination wrench and socket (optional for 3-Point Kit)

Setting up the Cultipacker without Kits:

The cultipacker will arrive crated and will need to be removed from the crate fully before attaching/transporting/assembling the cultipacker.

To remove the cultipacker from the shipping crate, take the cultipacker in the crate to a level firm surface where the crate can be removed. If the optional 3-point kit/wheel kit was shipped with the cultipacker, remove the packaging from the crate before removing the crate. Using a pry bar/crow bar, remove the entire crate from around the cultipacker. With the entire crate removed from the cultipacker, and clear of the area; back the tow vehicle up to the tongue of the cultipacker. Using the provided pin secure the cultipacker to the tow vehicle, ensuring the attaching pin is secured properly before transporting/operating the cultipacker. Make sure the pillow block bearings are below the cultipacker frame for transport. If the pillow block bearings are above the frame, flip the tongue over before securing the cultipacker to the tow vehicle.

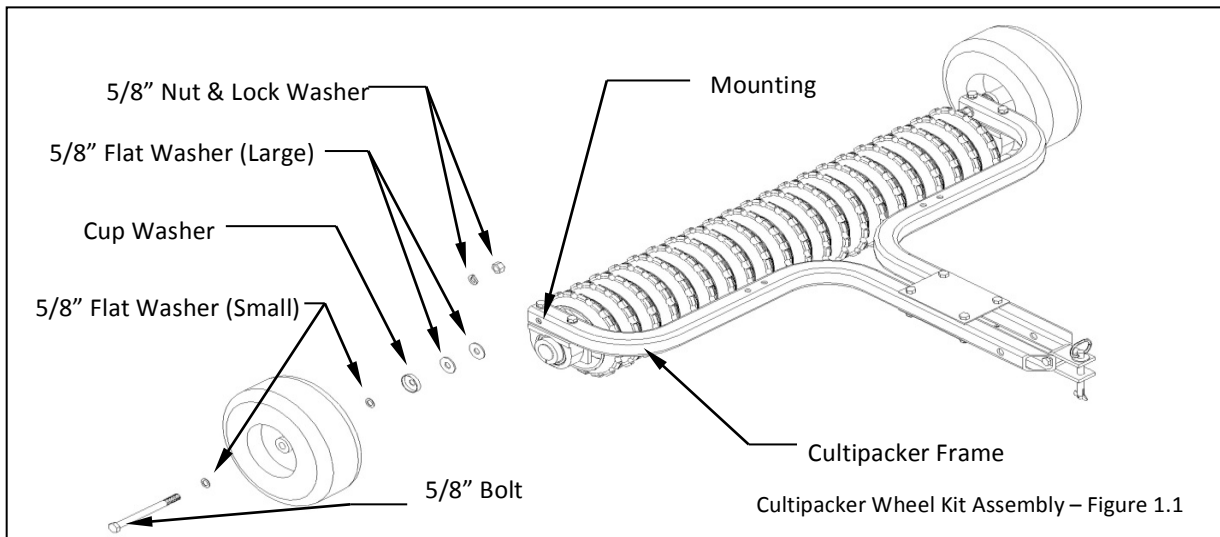
****Note to Operator:** *If one of the optional kits was purchased with the cultipacker, see below for instructions on attaching each kit before transporting/operating the cultipacker.*



CAUTION: Use caution when removing the cultipacker from the crate. Care should be taken to prevent back injuries or other lifting related injuries.

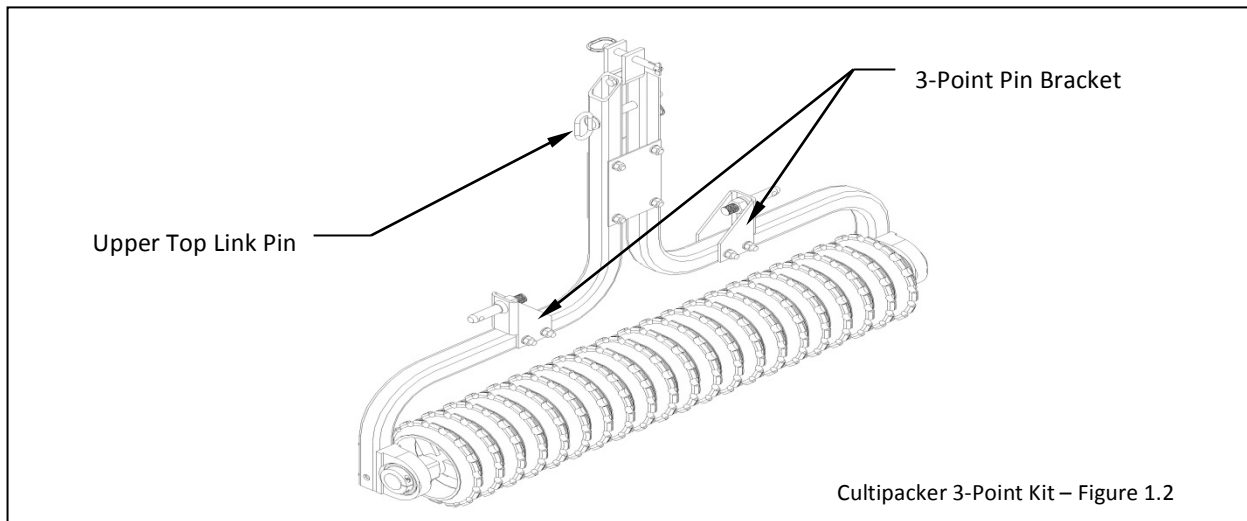
Assembly of Optional Wheel Kit:

1. Remove the 5/8" nut and lock washer from each wheel assembly. All other hardware included should stay on the wheel assembly as shown in Figure 1.1 on page 5.
2. Insert the end of the wheel assembly bolt through the pre-drilled hole on the cultipacker frame, and secure the bolt using the 5/8" nut and lock washer that was removed in step 1. See Figure 1.1 on page 5 for reference.



Assembly of Optional 3-Point Kit:

1. Remove the two ½" nuts, lock washer, and bolts from each of the lower 3-point pin brackets.
2. Attach each of the 3-point pin brackets on to the pre-drilled holes on the frame of the Cultipacker frame. Use the two ½" nuts, lock washers, and bolts removed in step 1 to secure each of the brackets to the cultipacker frame. Refer to Figure 1.2 for reference.
3. Install the upper top link pin into the pre-drilled hole on the tongue of the cultipacker frame. Refer to Figure 1.2 for reference.



Operations and Maintenance –

Using the Cultipacker without the Wheel Kit:



CAUTION: Care should be taken when flipping the cultipacker over for either use or transport. Place one foot on the packer wheels and securely hold the tongue while flipping. Improper flipping can result in bodily injury and/or property damage.

Attach the Cultipacker to the tow vehicle so that the pillow block bearings are below the frame. If the pillow block bearings are above the frame, flip the tongue over prior to securing the cultipacker to the tow vehicle; and secure the cultipacker tongue to the tow vehicle using the provided hitch pin and lynch pin.

The cultipacker is ready for transport and operation.

To disconnect the cultipacker from the tow vehicle, transport the cultipacker to the desired storage area. Shut off the tow vehicle and engage the parking park. Carefully remove the securing hitch pin and lynch pin from the tongue of the cultipacker. With the pin removed push the cultipacker away from the tow vehicle and secure the hitch pin with lynch pin back to the tongue of the cultipacker.

The cultipacker is now ready for storage.

****Note to the operator:** Avoid transporting the ABI Cultipacker over hard road type surfaces as this can cause excessive packer wheel wear or possible packer wheel damage.

Using the Cultipacker with the Wheel Kit:



CAUTION: Care should be taken when flipping the cultipacker tongue over for either use or transport. Place one foot on the packer wheels and securely hold the tongue while flipping. Improper flipping can result in bodily injury and/or property damage.

1. Back the tow vehicle up to the cultipacker, shut off the tow vehicle, and engage the parking brake. Allow extra room between the cultipacker and the tow vehicle if the tongue has not been flipped over to allow the transport wheels to touch the ground.
2. Push down on the tongue and secure the tongue of the cultipacker to the tow vehicle using the provided hitch pin and lynch pin. Firmly hold the tongue of the cultipacker when attaching the cultipacker to the tow vehicle.

The cultipacker is now ready for transport.

3. Transport the cultipacker to the area it will be used, shut off the tow vehicle and engage the parking brake and dismount the tow vehicle.
4. Carefully disconnect the cultipacker from the tow vehicle by removing the securing hitch pin with lynch pin. When disconnecting the cultipacker from the tow vehicle with the wheels on the ground, make sure the tongue is held securely while removing the securing hitch pin and lynch pin.

5. With the tires on the ground, spin the cultipacker around so the tongue of the cultipacker is facing directly away from the tow vehicle.
6. Flip the tongue of the cultipacker over and secure the cultipacker to the tow vehicle using the provide hitch pin and lynch pin.

The cultipacker is now ready for operation.

Disconnecting the Cultipacker with the Wheel Kit:

1. With the transport wheels on the ground, transport the cultipacker to the desired storage area.
2. Carefully disconnect the cultipacker from the tow vehicle by removing the securing hitch pin with lynch pin. When disconnecting the cultipacker from the tow vehicle with the wheels on the ground, make sure the tongue is held securely while removing the securing hitch pin and lynch pin.

The cultipacker is now ready for storage.

Connecting the Cultipacker with the 3-Point Kit:



CAUTION: Care should be taken when flipping the cultipacker tongue over for either use or transport. Place one foot on the packer wheels and securely hold the tongue while flipping. Improper flipping can result in bodily injury and/or property damage.



CAUTION: Care should be taken when either mounting or removing the cultipacker from a 3-point assembly. Securely support the cultipacker to prevent bodily injury and/or property damage.

****Note to operator:** The 3-point kit on the cultipacker is designed to work with a CAT I tractor 3-point assembly only. Refer to Figure 1.2 on page 5 of this manual for reference on the 3-point kit.

****Note to operator:** If the wheel kit is attached to the cultipacker along with the 3-point kit, the wheel kit will need to be removed prior to using the cultipacker with the 3-point kit.

1. Back the tow vehicle up to the cultipacker, lining up the 3-point lift assembly of the tractor to packer wheels of the cultipacker. If the 3-point lift assembly of the tractor is directly above the packer wheels of the cultipacker may need to be adjusted before it can be attached to the tractor 3-point assembly.
2. Lower the 3-point assembly down on the tractor, shut off the tractor, engage the parking brake and dismount the tractor.
3. Lift the tongue of the cultipacker up, and secure the bottom arms of the 3-point assembly to the 3-point pin brackets on the frame of the cultipacker.
4. Next remove the upper top link pin on the cultipacker frame, and attach the top link to the cultipacker frame using the upper top link pin.

5. Ensure that all the pins have been secured properly using the provided lynch pins.

The cultipacker is ready for operation.

Disconnecting the Cultipacker from the Tractor:

****Note to Operator:** Refer to Figure 1.2 on page 5 of this manual for reference on the 3-point kit.

1. Back the tractor into the area where the cultipacker will be stored. Allow enough room for the cultipacker to be disconnected and moved after disconnected.
2. Lower the cultipacker to the ground, until the packer wheels sit firmly to the ground.
3. Shut off the tractor, engage the parking brake, and dismount the tractor.
4. Disconnect the bottom arms of the 3-point assembly first by removing the lynch pin from the 3-point bracket on the cultipacker. With the pin removed slide the bottom arm off the securing pin. Repeat on the opposite side. Make sure to securely support the cultipacker when disconnecting the bottom arms of the Tractor.



WARNING: The cultipacker may shift during the disconnect process. Use caution when disconnecting the cultipacker from the tractor to prevent bodily harm and/or property damage.

5. With both of the bottom arms of the 3-point assembly disconnected, remove the upper top link pin from the Cultipacker frame to disconnect the top link.
6. With the top link and bottom arms disconnected, the cultipacker is ready for storage.

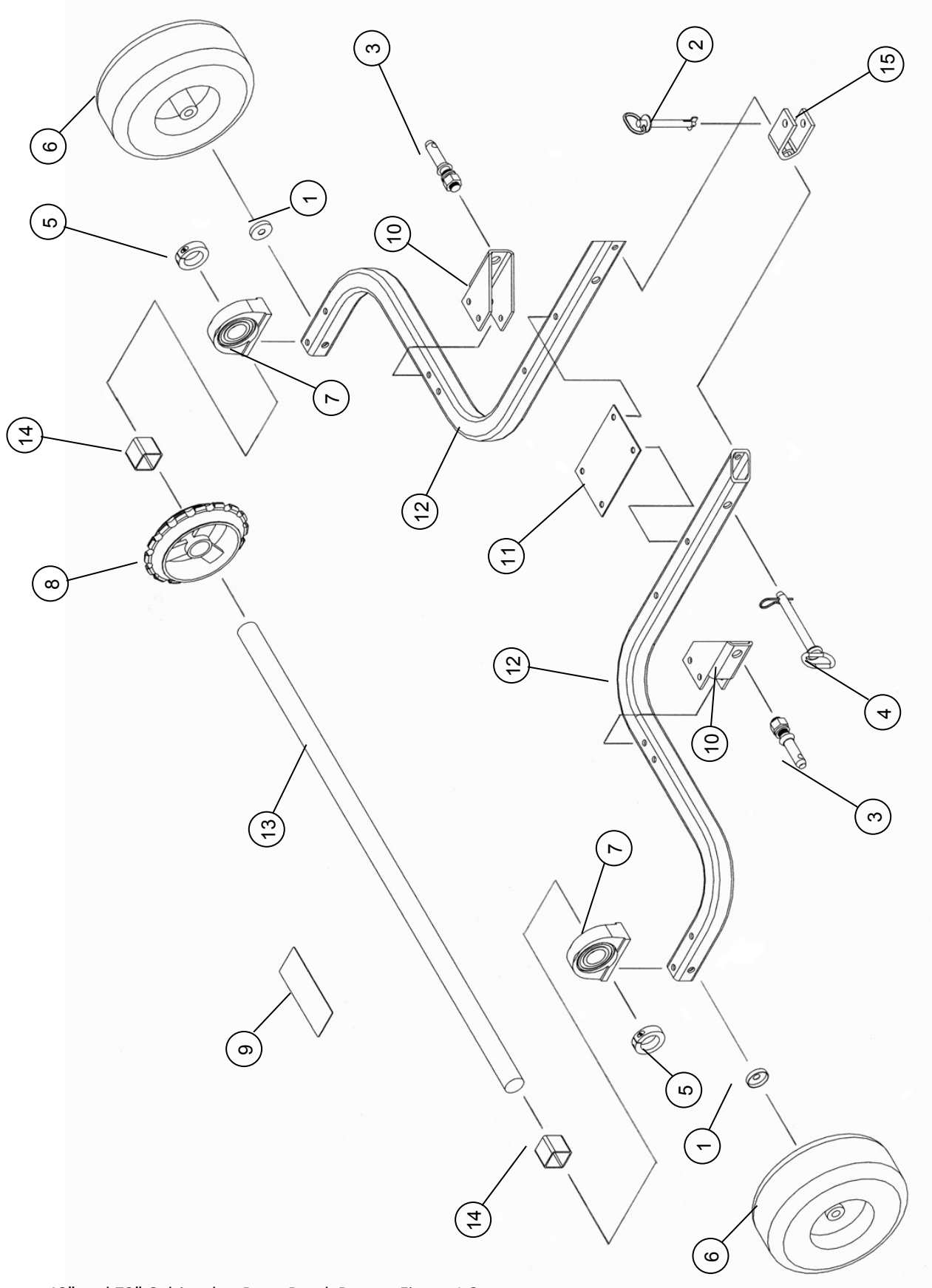
Maintenance –

There are two grease points on the cultipacker. There are two pillow block bearings on each end of the packer wheel shaft. It is recommended that these bearings be greased after every 4 hours of use. If using the cultipacker in high dust environments more frequent greasing may be needed.

Parts Breakdown –

Use Figure 1.3 on page 10 for reference on parts

Item	Description	Quantity
1	Cup Washer – Wheel Kit Only	2
2	Tension Lock Pin (5/8" x 3-1/2")	1
3	Lift Arm Pin (7/8" x 5-1/2") – 3-Point Kit ONLY	2
4	Fixed Handle Hitch Pin (3/4" x 7-1/4") – 3-Point Kit ONLY	1
5	Single Split Collar (1-3/4" I.D. x .69" Thick)	2
6	Offset Wheel Assembly, Pnematic Turf Thread 2 Ply Tire (13/500 x 6) Wheel Kit Only	2
	Wheel Bearing-Percision Sealed (1-3/8" O.D. x 5/8" I.D.)	2
	Wheel Bearing Spacer	1
7	Tapped Pillow Block Bearing (45mm Bore)	2
8	Packer Wheel (1-3/4" Shaft, 9-1/2" Dia.) – 48" Cultipacker	21
8	Packer Wheel (1-3/4" Shaft, 9-1/2" Dia.) – 72" Cultipacker	32
9	ABI Serial Number Place	1
10	3-Point Bracket – (3-Point Only)	2
11	Connector Plate	2
12	Cultipacker Frame (48" model and 72" model)	2
13	Packer Wheel Shaft (48" model and 72" model)	1
14	Spacer	2
15	Tongue Clevis	1



48" and 72" Cultipacker Parts Break Down - Figure 1.3

After reading the Cultipacker Manual if there are additional questions regarding the use, maintenance, setup, operation of the Cultipacker please contact ABI's Customer Service Department at:

855-211-0598 M-F 8am-8pm EST



abiATTACHMENTS

COMMAND SERIES TM