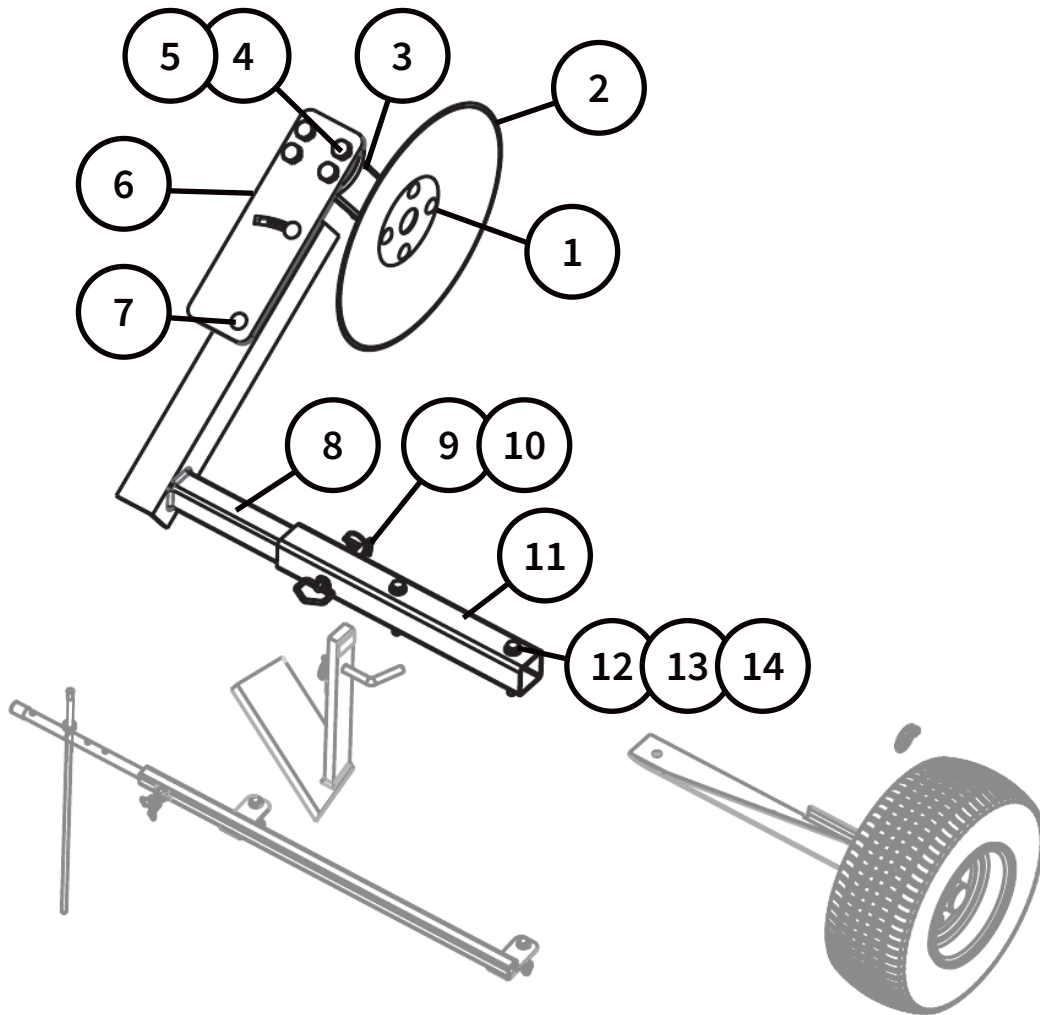


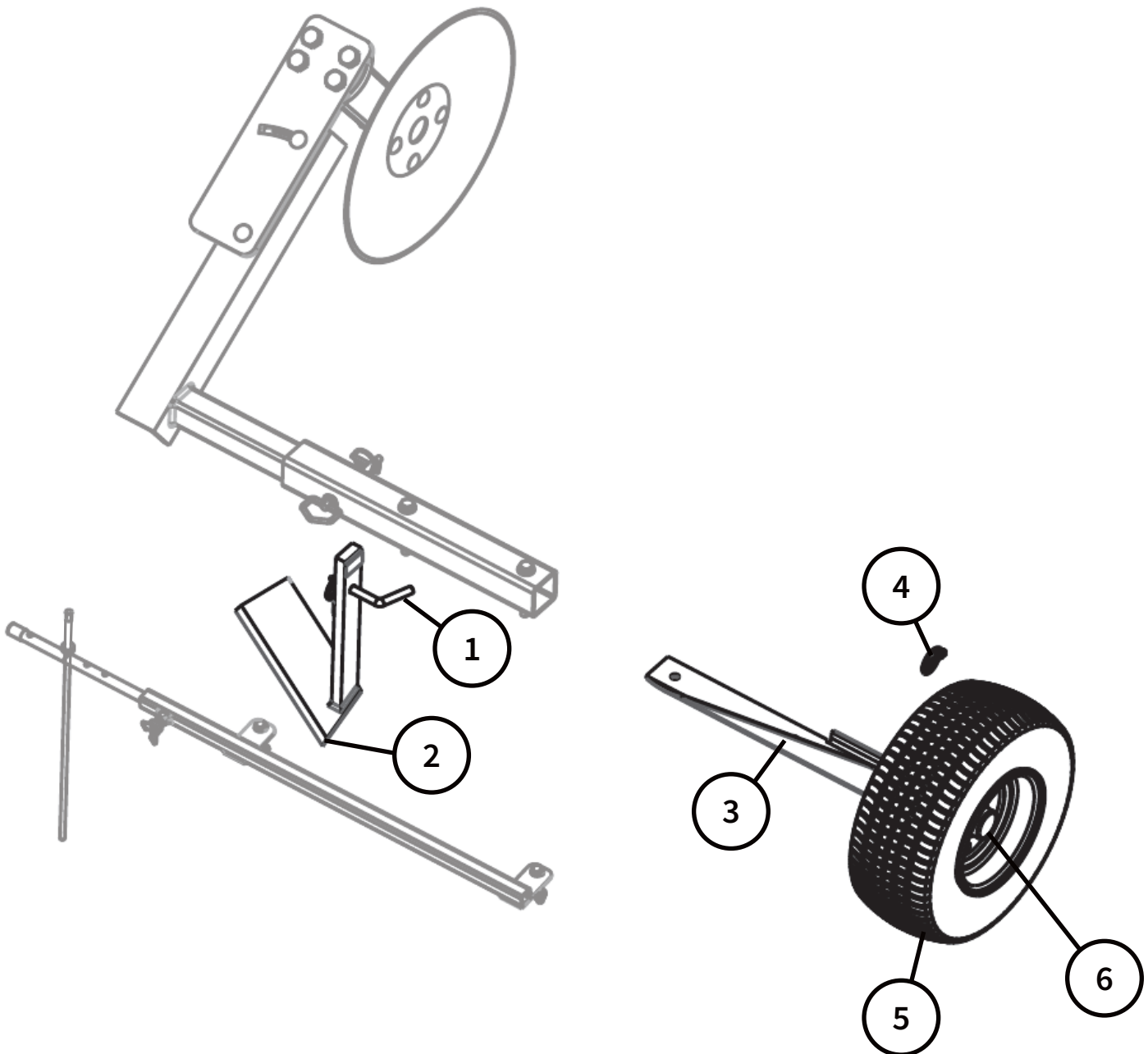
Product Instructions

**ABI Force Z-23
Edger Attachment**

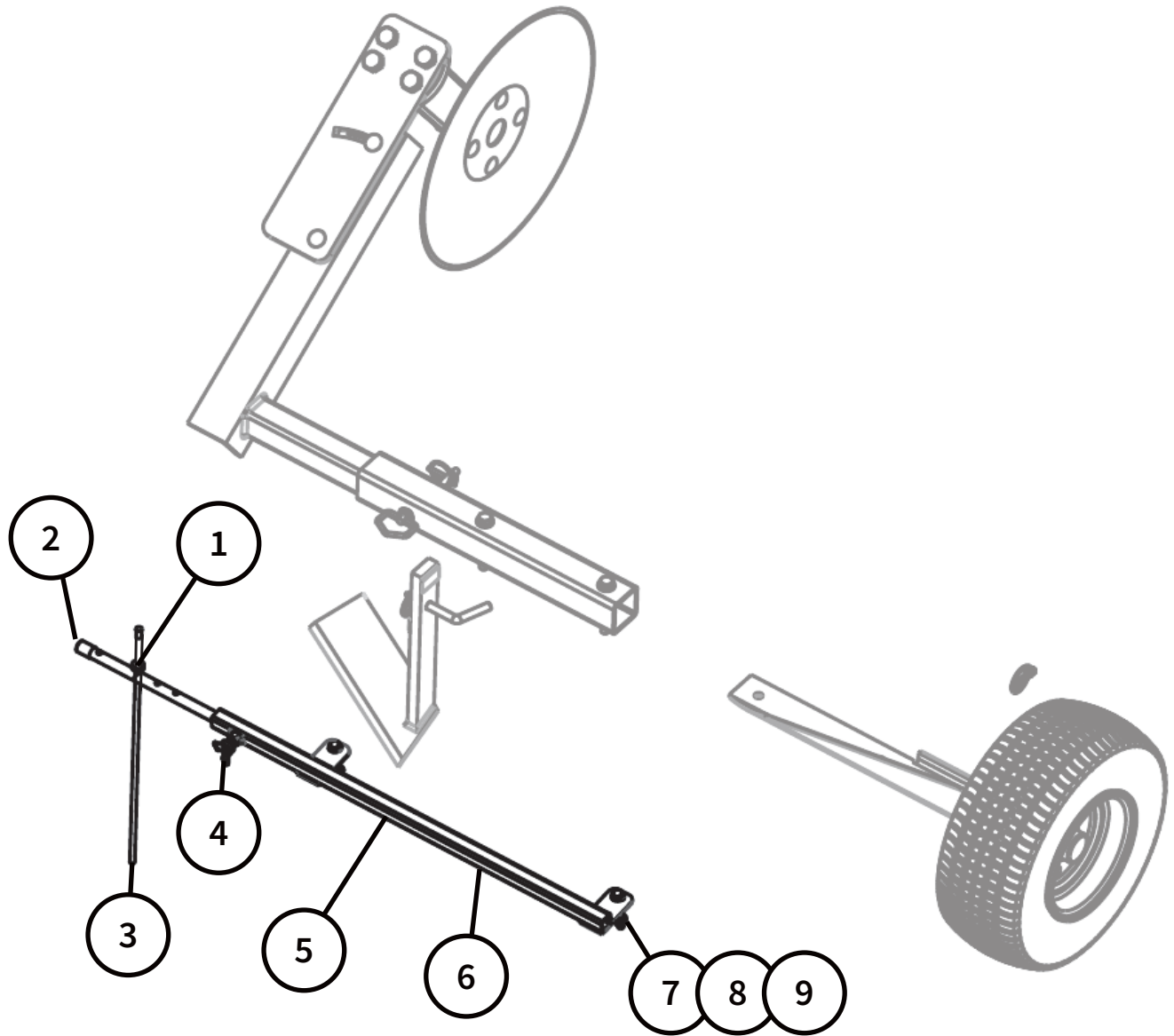
ITEM	PART #	DESCRIPTION	QTY
1	10-20188	CARR BOLT:1/2-13 1.5":ZINC GR5	4
2	10-10349	DISK:18" CONCAVE:4 ON 5 BOLTS	1
3	10-10350	ARM:DISK MNT WITH BRNG:11"	1
4	10-20070	HX HD BOLT:3/4-10 2.25":ZINC GR5	4
5	10-20206	NYLOCK NUT:3/4-10:ZINC YEL GR 8	4
6	10-30624	PLATE:BLADE MOUNT:FORCE EDGER	1
7	10-20187	CARR BOLT:1/2-13 2":ZINC GR5	2
8	10-40172	WLDMT:BLADE MNT:FORCE EDGER	1
9	10-20232	LYNCH PIN:1/4"X1.25":ZINC	2
10	10-20230	HITCH PIN:1/2" X 5":ZINC	1
11	10-30631	TUBE:BLADE MNT:FORCE EDGER	1
12	10-20141	HX HD BOLT:1/2-13 4":ZINC GR5	2
13	10-20194	FLT WSHR:1/2 SAE: CL ZINC	10
14	10-20201	NYLOCK NUT:1/2-13:ZINC GR 5	8



ITEM	PART #	DESCRIPTION	QTY
1	10-20221	BENT PIN:1/2"X3.5":ZINC	1
2	10-40245	WLDMT: EDGER CLEAN UP	1
3	10-40311	WLDMT: TIRE MOUNT: EDGER	1
4	10-20231	LYNCH PIN:3/8"X1.5":ZINC	1
5	10-60006	TIRE:16.5x6.50x8 TURF:5 ON 4.5 WH OFFSET RIM	1
6	10-60058	HUB ASM:5 ON 4.5":1" ID BRNG	1

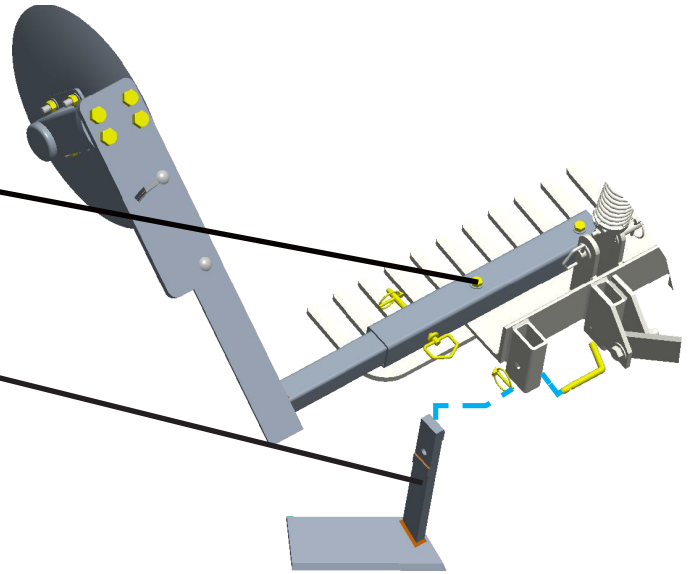


ITEM	PART #	DESCRIPTION	QTY
1	10-20257	FLT WSHR: 5/16" X 3/4" X 1/16":NEOPRENE RUBBER	2
2	10-10351	CAP:3/8 PIPE:VINYL BLACK	1
3	10-10352	MARKER:5/16" FIBERGLASS	1
4	10-20256	WING BOLT:1/2"-13 X 1.5:ZINC GR5	1
5	10-40430	WLDMT: EDGER SIGHT GAGE MNT: FORCE V2	1
6	10-30637	TUBE:ADJUSTABLE:FORCE SIGHT GAGE	1
7	10-20055	NYLOCK NUT:3/8-16:ZINC GR5	2
8	10-20065	HX HD BOLT:3/8-16 3 ZINC GR5	2
9	10-20195	FLT WSHR:3/8 SAE:CL ZINC	4

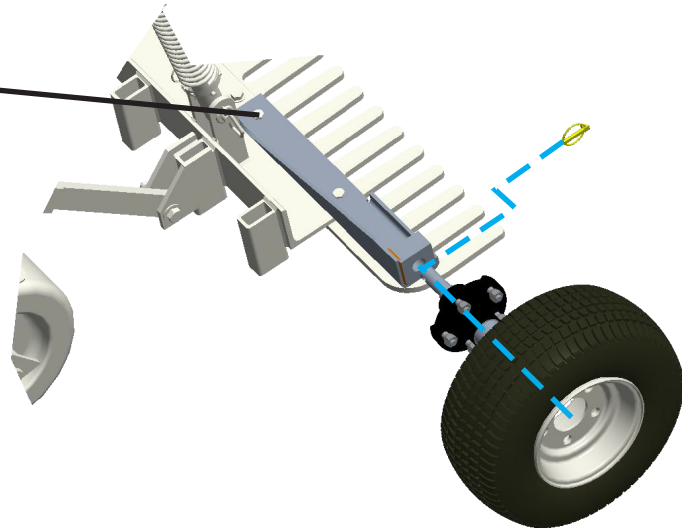


Edger tube mounts to the back of the rake on the right side. Hardware supplied with the edger.

Clean-up tool pins into the last pocket on the right side of the rake weldment.



Stabilizing wheel assembly mounts to back of the rake on the left side. Reuse existing rake hardware.



Sight gauge weldment bolts to the existing holes in front of the axle tube. Hardware supplied with the edger.

