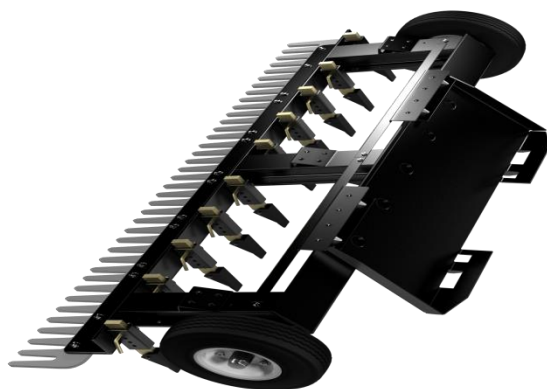


SR2

COMMAND SERIES

Skid Steer Attachment Setup/User Guide



Please read fully and understand before operating!!

Please read fully and understand before operating!!

Thank You,

On behalf of the ABI family we would like to thank you for your recent purchase of your SR2 Skid Steer Attachment. Our Company's goal is to provide you, our customer; with innovative, quality tools as well as first rate customer service.

These instructions are designed to help you, the customer; get your new SR2 off the delivery pallet and into use. Once you have put your SR2 to work, if you have any questions, please feel free to call and talk with one of our friendly and knowledgeable Customer Service Department. To contact our Customer Service Department call 855-211-0598, M- Th 8am-8pm or Friday 8am-5pm EST.

To order parts for your SR2 please contact our Customer Support Department by phone at:
855-211-0598 M-Th 8am – 8pm EST or Friday 8am-8pm EST

Contact Information –

Additional information on the SR2 can be found on the ABI Support site at: www.abisupport.com

To contact ABI's Customer Service Department after hours go to the Help Desk on the ABI Support page at: www.abisupport.com and send our Customer Service Department an email regarding any issue you may be experiencing with the SR2.

To the Operator –

The information presented in this manual will prepare you to operate the SR2 in a safe and knowledgeable manner. Operating the SR2 in a proper manner will provide a safer working environment and create a more efficient result. Read this manual fully and understand the entire manual prior to setup, operation, adjusting, performing maintenance, or storing the SR2. This manual contains information that will allow you the operator to get years of dependable performance from the SR2.

This manual will provide you with information on safely operating and maintaining the SR2. Operating the SR2 outside of the stated safety and operations guidelines may result in injury to operator and equipment, or void the warranty.

The information provided in this manual was current at the time of printing. Variations may be present as Absolute Innovations, Inc. continues to improve and upgrade the SR2 for future use. Absolute Innovations, Inc. reserves the right to implement engineering and design changes to the SR2 as may be necessary without prior notification.

Please read fully and understand before operating!!

Operational Safety Rules-

Please exercise caution at all times when setting up, operating, or performing maintenance on the ABI SR2. Remember, any piece of equipment like the ABI SR2 can cause injury if operated improperly or if the user does not understand how to operate the equipment. Exercise caution at all times with using the ABI Force.

- Only operate the SR2 with all covers, shields, and safety devices installed and secured prior to operation.
- Never permit any person to ride or board the SR2 at any time. **NEVER ALLOW RIDERS ON THE SR2!**
- Use care and maintain minimum ground speed when operating the SR2 on a hillside, or when operating close to ditches, fences, or water sources.
- Never place any body part under the while the SR2 is in operation.
- Never allow anyone near the SR2 while in operation.
- Operate the SR2 in the daylight or under good artificial light. Operator should always be able to clearly see where they are going.
- Be alert for hidden hazards. Always operate the SR2 with caution over work environments that may have buried obstacles.
- Stay well and clear of all moving parts. Keep all limbs clear of attachments when making adjustments with all hydraulically operated attachments.
- Use caution when operating the SR2 in icy, wet, or snowy condition.
- Do not use the SR2 on highways or public thoroughfares. The SR2 is designed for off road use only.
- Always follow Skid Steer Manufacturer's rules for safe Operation of Skid Steer, and for proper procedures for attaching and disconnecting attachments. Contact your local dealership for an Owner's Manual for any questions related to the safe operation of the Skid Steer.

Use caution when operating the SR2. Using the SR2 outside of stated safety and operations guidelines may result in injury to operator or others, property damage, or a void in warranty.

Specifications –

| | |
|-----------------------------|---------------------------|
| Size | 7.5' (89") |
| Raking Width | 7.5' (89") |
| Weight | 700 lbs. |
| Scarifiers | 10 |
| Scarifier Spacing | 8-10" |
| Dimensions | 40"L x 89"W x 19"H |
| Hydraulic Scarifiers | Optional |
| Warranty | 1 Year |
| Vehicle | Skid Steer Only |

Please read fully and understand before operating!!

Setup and Operations -

Removing from Shipping Crate:

Tools Needed:

Crow Bar/Pry Bar
Metal Snips

Transport the SR2 in the shipping crate to a level firm surface. Using a crow bar/pry bar remove the top and sides from the shipping crate. Place the removed lumber free of the shipping crate once it is removed. With the top and sides removed from the shipping crate, use the metal snips to cut the metal band from around the SR2 to free it from the shipping crate.

The SR2 is now ready to be attached to the Skidsteer.

Attaching the SR2 to a Skid Steer:

1. Lift the latch handles fully on the mounting plate to ensure the lock pins are fully retracted.
2. Enter the Skid Steer, fasten the seat belt, start engine, and disengage the parking brake.
3. Drive the Skid Steer to the location of the SR2.
4. Tilt the mounting plates of the Skid Steer forward. Slowly drive forward, while raising the boom; and guide the top of the mounting plates into the SR2 mounting brackets.
5. With the mounting plates firmly in place, raise and roll back the mounting plates. Continue to raise and roll back the boom until the SR2 rests against the front of the mounting plate.
6. With the SR2 fully supported by the mounting plates, lower the boom until the SR2 is resting just above the ground.
7. Engage the parking brake, turn off the engine, and carefully exit the Skid Steer.
8. Lower each of the latch handles fully, and ensure the lock pins are fully seated.

The SR2 is ready to be setup for operations. For information on setting up the SR2 go to the “Setting up the SR2 for Operations” section on page 5.

****NOTE TO OPERATOR:** If the optional Hydraulic Scarifier’s are attached to the SR2, use caution when hooking up the SR2 to the Skid Steer. Ensure that all hydraulic hoses are clear before attempting to attach the SR2 to the Skid Steer.

****NOTE TO OPERATOR:** Some Skid Steer models may have special hook up requirements. If your Skid Steer has special hook up requirements, please refer to the Skid Steer Owner’s Manual for information on installing an Attachment to your model Skid Steer.

Disconnecting the SR2 from a Skid Steer:

1. Drive the Skid Steer to an area with a firm level surface.
2. Lower the Boom of the Skid Steer until the SR2 is sitting on the ground. The pitch of the SR2 may need to be changed to ensure that the Wheels and the Finish Rake both make contact to the ground at the same time.

Please read fully and understand before operating!!

3. Engage the parking brake and stop the engine.
4. Lift the latch handles fully to ensure the lock pins are fully retracted.
5. With the latch handles fully retracted, tilt the mounting plate forward while slowly backing away from the SR2.

NOTE TO OPERATOR: Some Skid Steer models may have special disconnect requirements. If your Skid Steer has special disconnect requirements, please refer to the Skid Steer Owner's Manual for information on disconnecting an Attachment from your model Skid Steer.

Setting up the SR2 for Operations –

Leveling the SR2 for Operations:

1. With the SR2 attached to the Skid Steer, and the scarifier depth set for use; transport the SR2 to an area where the unit will be used. See section "Setting the Scarifier Depth:" below for manually setting the depth of the scarifiers on the SR2.
2. Using the boom of the Skid Steer lower the SR2 down until the SR2 wheels rest on the ground.
3. With the wheels firmly touching the ground, tilt the SR2 forward while slowly backing up with the Skid Steer until the finish rake of the SR2 also touches the surface. Once the finish rake and the wheels of the SR2 touch the ground at the same time, the SR2 is ready to have for the depth of the scarifiers to be set.

The following section covers the setup of the SR2 without the Hydraulic Scarifiers option only. For setup with the Hydraulic Scarifiers on the SR2 go to page 6.

Setting the Scarifier Depth:

The scarifiers on the SR2 will come pinned above the receiver tube using a ½" bent pin and ¼" lynch pin. The scarifiers will need to be adjusted prior to use. The following directions are for adjusting the scarifiers for use:

1. With the SR2 attached to the Skid Steer and level for operation, raise the SR2 off the ground 6"-7".
2. Set the parking brake, shut off the engine and exit the Skid Steer.
3. Remove the lynch pin from the bent pin and move the scarifier down in the receiver tube until the hole in the shank of the scarifier lines up to the first hole of the receiver tube.
4. With the holes lined up, insert the bent pin and secure with the lynch pin. Repeat this process for the remaining scarifiers to be adjusted.

The depth that SR2 will work the ground is controlled by the position of the scarifiers in the receiver slot. Move the scarifiers down as need to work the ground deeper, or raise the scarifiers as needed to work the ground less. Below is information on checking the depth of the scarifiers to ensure they are operating at the proper depth.

5. Transport the SR2 to an area where the attachment will be used.
6. Using the Skid Steer boom lower the SR2 down until the scarifiers touch the ground.
7. Slowly back up the Skid Steer while lowering the SR2 until the wheels and finish rake of the SR2 touch the ground.

Please read fully and understand before operating!!

8. With the wheels of the SR2 touching the ground, continue to back up 4-5' to ensure the full depth of the scarifiers is reached.
9. Stop the Skid Steer, set the parking brake, shut off the engine and exit the Skid Steer.
10. Check to make sure the desired working depth for the scarifiers is being reached. If the depth of the scarifiers is too deep/shallow, adjust the depth of the scarifiers and repeat steps 5-10 of this section till the proper depth is reached. Make sure to check the depth of the scarifiers after every adjustment.

The wheels of the SR2 can also be removed to allow the scarifiers to penetrate the ground even more. The wheels of the SR2 allow the SR2 to work at a more consistent depth. If depth below normal operating depth is desired, then removing the wheels will allow the operator to reach that depth. To remove the wheels from the SR2 follow these instructions:

11. Raise the SR2 off the ground until the finish rake is about 5"-6" off the ground.
12. Set the parking brake, shut off the engine and exit the Skid Steer.
13. Remove the bent pin and lynch pin from the mounting tube located under the frame of the SR2 behind the wheel.
14. With bent pin removed remove wheel and hub assembly from the mounting tube. The wheel and hub assembly should be stored in a safe location to prevent any damage to the wheel and hub assembly. Reverse this process to mount the wheels back onto the SR2.

Follow steps 1-10 of this section to set the depth of the scarifiers after removing or attaching the wheels to/from the SR2.

Setting up the SR2 for Operations with Hydraulic Scarifiers –

Hooking up the Hydraulic Scarifiers:

1. Attach the SR2 to the Skid Steer. For instructions on attaching the SR2 to the Skid Steer refer to the "Attaching the SR2 to a Skid Steer" on page 4, or refer to the Owner's Manual for the Skid Steer.
2. With the SR2 attached to the Skid Steer, and resting firmly on the ground; set the parking brake, shut off the engine and exit the Skid Steer.
3. Hook the ends of the SR2 hydraulic hoses into the proper hydraulic port on the Skid Steer. The hydraulic hoses come with standard male/female hydraulic fittings. Some Skid Steer models may require proprietary hydraulic fittings, if your Skid Steer requires specific hydraulic fittings please see your local dealer for new fittings.
4. With the hydraulic hoses attached and fully seated, enter the Skid Steer, fasten the seat belt, and start the engine.
5. Cycle the hydraulics on the SR2 till the scarifiers move freely when the hydraulic controls are operated. ****Note to Operator:** Check the hydraulic fluid level after cycling the SR2 hydraulics to ensure the reservoir still has a sufficient level of fluid.

Please read fully and understand before operating!!

Setting Scarifier Depth with Hydraulic Scarifiers:

1. Transport the SR2 to an area where the attachment will be used.
2. Lower the SR2 until the wheels and finish rake touch the ground at the same time. The SR2 may need to be backed up slightly to allow the scarifiers to penetrate the surface with the hydraulic scarifiers attached.
3. Using the hydraulic controls lower the scarifiers down slowly, and in no more than 1" adjustments at a time; while backing up with the Skid Steer. Once the depth is set continue to back up an addition 5-6'.
4. Stop the Skid Steer, set the parking brake, shut off the engine and exit the Skid Steer.
5. Check to make sure the desired working depth for the scarifiers is being reached. If the depth of the scarifiers is too deep/shallow, adjust the depth of the scarifiers and repeat steps 1-4 of this section till the proper depth is reached. Make sure to check the depth of the scarifiers after every adjustment.

The wheels of the SR2 can also be removed to allow the scarifiers to penetrate the ground even more. The wheels of the SR2 allow the SR2 to work at a more consistent depth. If depth below normal operating depth is desired, then removing the wheels will allow the operator to reach that depth. To remove the wheels from the SR2 follow these instructions:

6. Raise the SR2 off the ground until the tires are about 5"-6" off the ground.
7. Set the parking brake, shut off the engine and exit the Skid Steer.
8. Remove the bent pin and lynch pin from the mounting tube located under the frame of the SR2 behind the wheel.
9. With bent pin removed remove wheel and hub assembly from the mounting tube. The wheel and hub assembly should be stored in a safe location to prevent any damage to the wheel and hub assembly. Reverse this process to mount the wheels back onto the SR2.

Follow steps 1-5 of this section to set the depth of the scarifiers after removing or attaching the wheels to/from the SR2.

Please read fully and understand before operating!!

Using the SR2 Finish Rake –

The Finish Rake on the SR2 can be used as a independent feature for use on jobs to distribute loose material. To use the finish rake as an independent feature follow the following procedure:

Smoothing out material with the Finish Rake:

1. With the SR2 attached to the Skid Steer, transport the SR2 to an area where the material has been broken up using the scarifiers on the SR2.
2. Lift the SR2 using the boom, and tilt the SR2 so that the finish rake is angled below the wheels of the SR2.
3. Lower the SR2 down so that the finish rake rest firmly on the surface. For areas with uneven surfaces the boom may need to be lowered or raised to prevent excess material from building up, or to allow for material to continue to be moved.
4. Slowly back up with the Skid Steer allowing the finish rake to move the material.
5. To give the job a finished look slowly raise the boom as the Skid Steer moves backward to allow the material to feather out over an area.

Pushing Material with the Finish Rake:

****Note to Operator:** The SR2 can be used to push material into an area. Always ensure the material has been loosened prior to pushing material, and never push material into an area where obstacles may be hidden, or out of operator view to prevent damage to the SR2 or property.

1. With the SR2 attached to the Skid Steer, transport the SR2 to an area where the material has been broken up using the scarifiers on the SR2.
2. Lift the SR2 using the boom, and tilt the SR2 so that the finish rake is angled below the wheels of the SR2.
3. Lower the SR2 down so that the finish rake rests firmly on the surface of the material.
4. Slowly push forward allowing the material to move forward with the SR2.
5. Once the material is moved into the area where it is needed, raise the boom and tilt the SR2 forward to allow the excess material to be deposited into the area.

Maintenance –

- **Check hardware daily to ensure that nuts and bolts are tight, and that pins are properly secured. If any hardware is found to be damaged replace hardware prior to operating the SR2**
- **The hubs will need to be repacked every 6 months. ABI recommends using a Hi-Temp Grease for packing the bearings inside the hubs.**
- **With the Hydraulic Scarifier Option: Check hydraulic fluid levels daily.**
- **With the Hydraulic Scarifier Option: Check all hydraulic hoses daily for damage or leaks. Replace any damaged hoses prior to operating the SR2.**

Please read fully and understand before operating!!

For additional setup or usage questions feel free to contact ABI's Customer Service Staff at 855-211-0598 M-Th 8am-8pm or Friday 8am-5pm EST. Additional information on the SR2 is available on the ABI support page at www.abisupport.com.

For questions on purchasing parts for your SR2 please contact the ABI Customer Service Department at 855-211-0598 M-Th 8am-8pm or Friday 8am-5pm EST.



abiATTACHMENTS

COMMAND SERIES TM