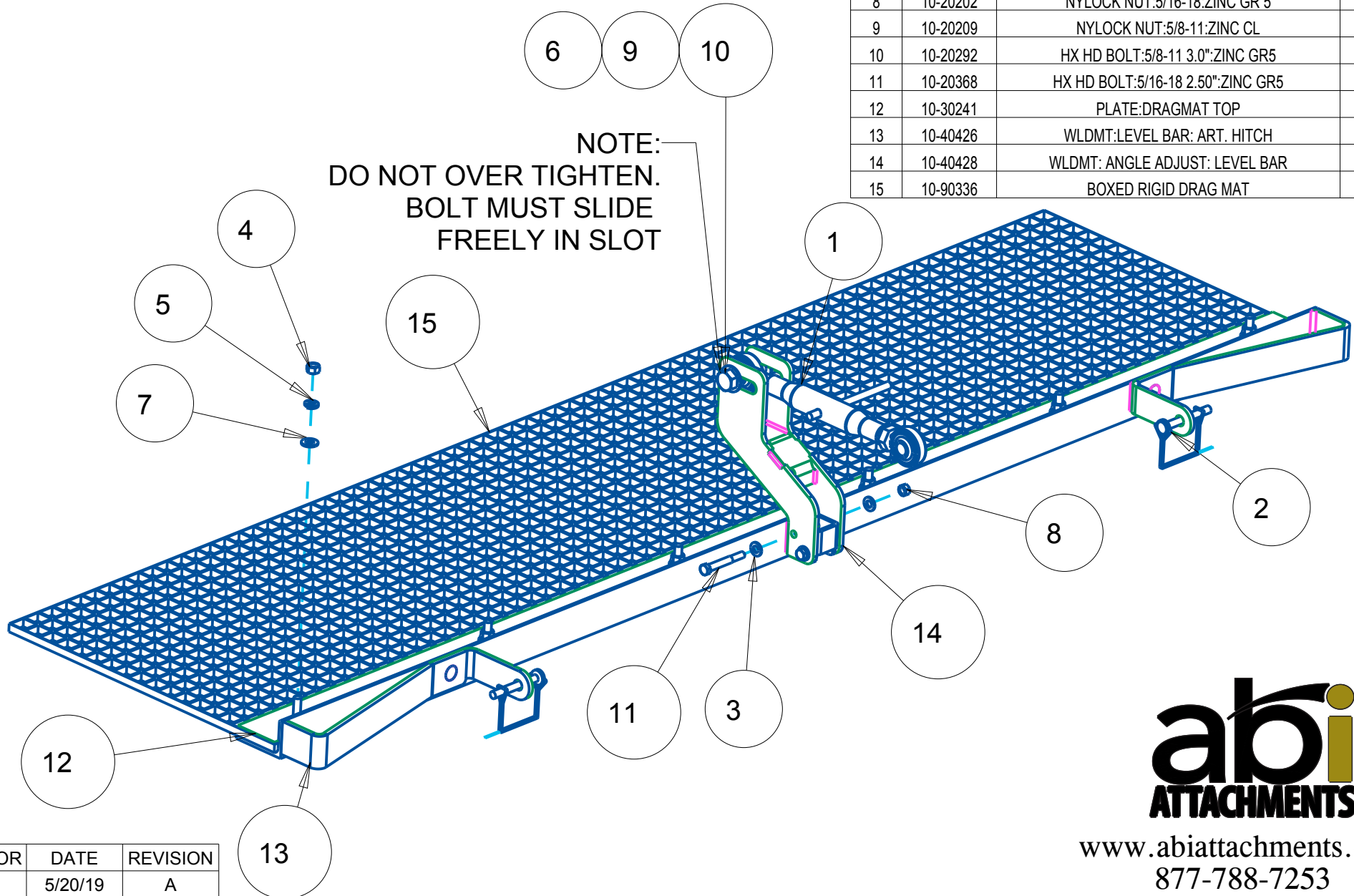


# Z-23 RIGID DRAGMAT PRODUCT INSTRUCTION SHEET

PN 10-10839

ITEM	PART #	DESCRIPTION	QTY
1	10-10316	TOPLINK:CAT0:11-15"	1
2	10-20125	PIN:3/8" SQ WIRELOCK:3.75 OAL	2
3	10-20128	5/16 SAE WASHER ZNC	4
4	10-20130	3/8 HEX FIN NUT ZINC GR 5	6
5	10-20133	3/8" SPLIT LOCKWASHER ZNC	6
6	10-20145	5/8 SAE F/W ZNC	2
7	10-20195	FLT WSHR:3/8 SAE:CL ZINC	6
8	10-20202	NYLOCK NUT:5/16-18:ZINC GR 5	2
9	10-20209	NYLOCK NUT:5/8-11:ZINC CL	1
10	10-20292	HX HD BOLT:5/8-11 3.0":ZINC GR5	1
11	10-20368	HX HD BOLT:5/16-18 2.50":ZINC GR5	2
12	10-30241	PLATE:DRAGMAT TOP	1
13	10-40426	WLDMT:LEVEL BAR: ART. HITCH	1
14	10-40428	WLDMT: ANGLE ADJUST: LEVEL BAR	1
15	10-90336	BOXED RIGID DRAG MAT	1



www.abiattachments.com  
877-788-7253

CREATOR	DATE	REVISION
DAB	5/20/19	A