

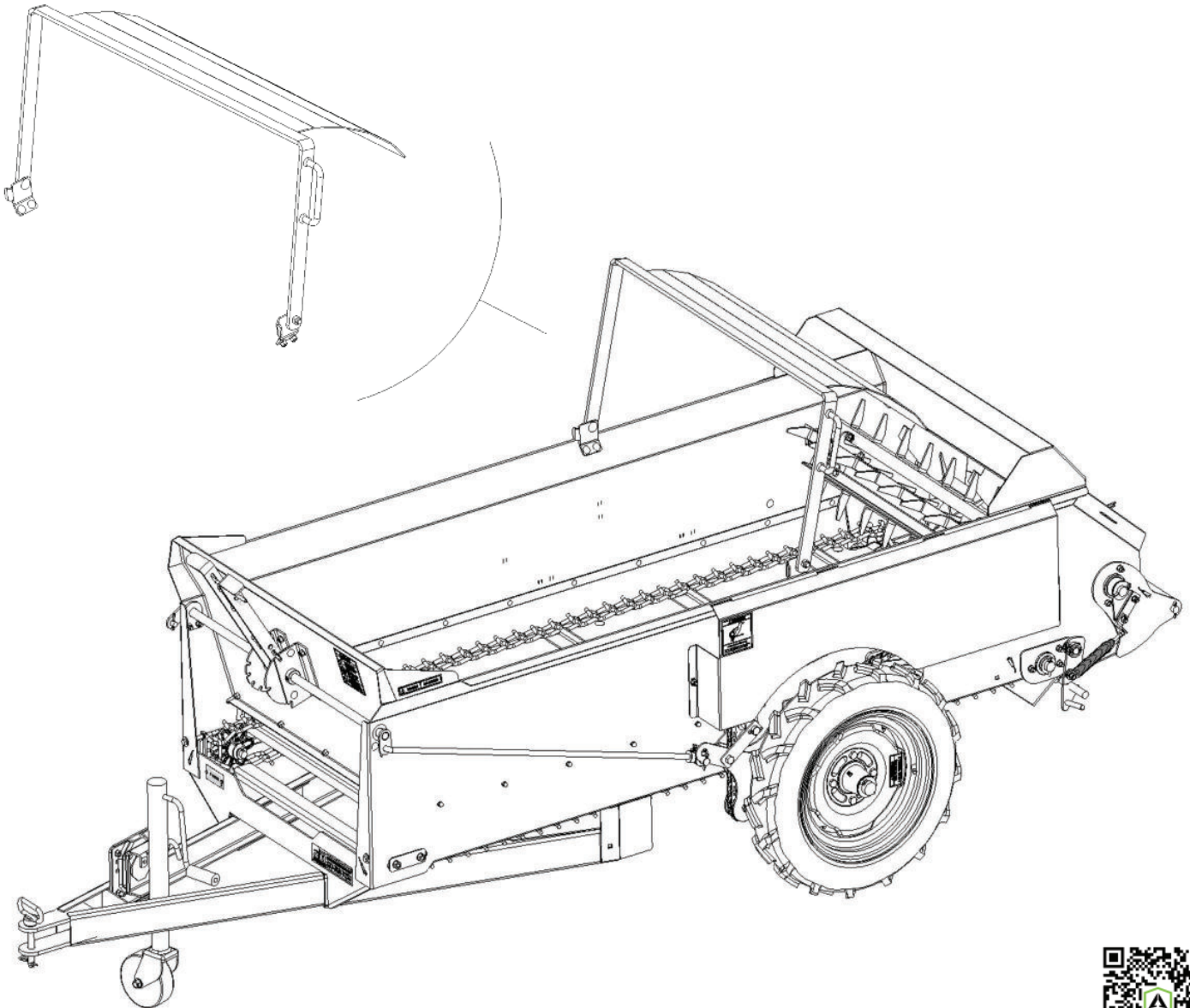


## **INSTRUCTION SHEET**

---

# **END GATE INSTALLATION**

### **25/50/65 CUBIC FOOT GROUND DRIVEN ABI CLASSIC SPREADERS**



[\*\*VIEW ABI SUPPORT PAGE\*\*](#)



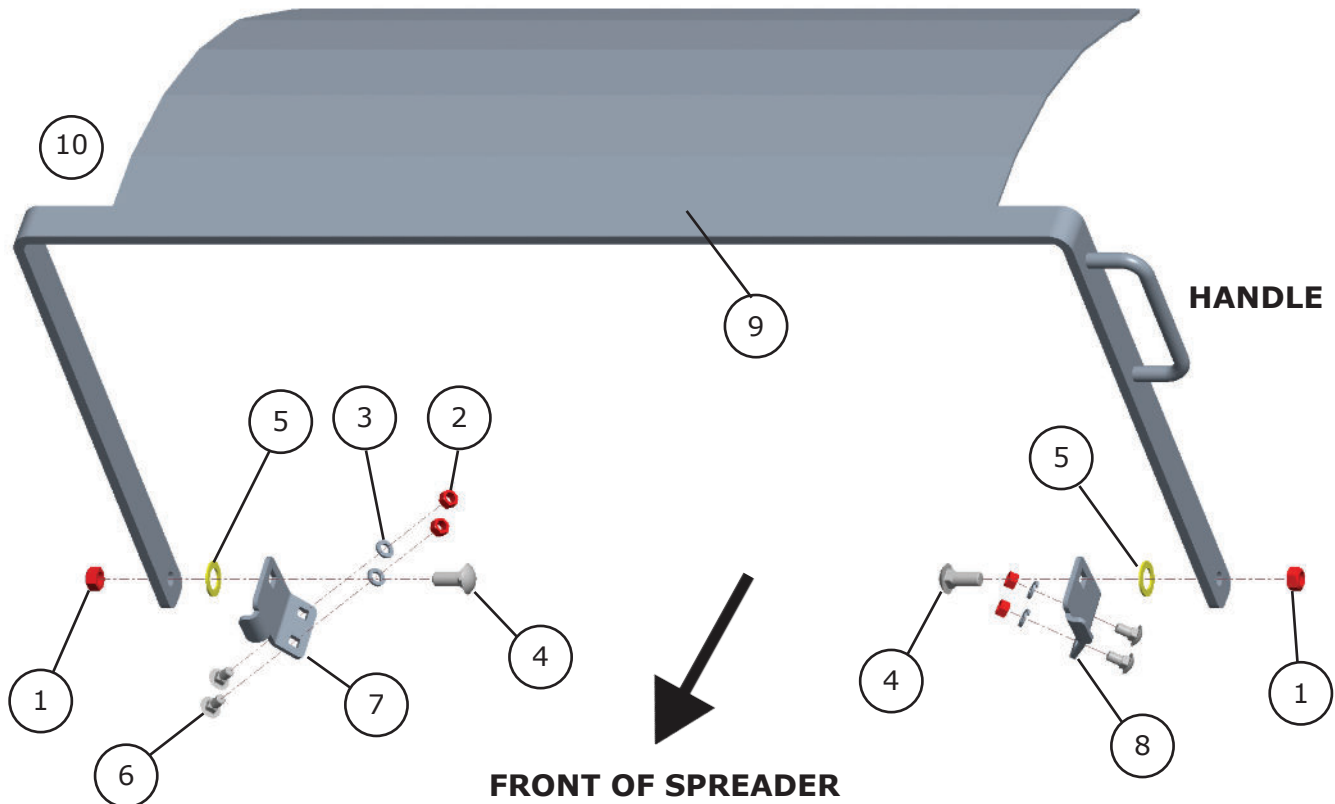
# PARTS DESCRIPTION:

**NOTE:** LOWER THE END GATE USING THE HANDLE TO AVOID DROPPING THE END GATE ONTO THE SIDE RAILS OF THE SPREADER

## ASM: END GATE:

RIGHT SIDE OF SPREADER

LEFT SIDE OF SPREADER



ITEM	PART #	DESCRIPTION	QTY
1	10-20050	1/2-13 LOCK NUT	2
2	10-20130	3/8" HEX NUT	4
3	10-20133	3/8" LOCK WASHER	4
4	10-20270	1/2 X 1-1/4" CARRIAGE BOLT	2
5	10-20426	3/4" MACHINE WASHER 1.25" OD	2
6	10-20475	3/8 X 3/4" CARRIAGE BOLT	4
7	10-31901	END GATE BRACKET, RIGHT	1
8	10-31902	END GATE BRACKET, LEFT	1
9	10-40580	WLDMT: END GATE PANEL (#25)	1
9	10-40550	WLDMT: END GATE PANEL (#50/#65)	1
10	10-90508	ASM: END GATE COMPLETE (#25)	1
10	10-90499	ASM: END GATE COMPLETE (#50/65)	1

# END GATE INSTALLATION:

## TOOLS NEEDED:

- GLOVES
- SAFETY GLASSES
- SAFETY SHOES
- PUNCH & HAMMER
- (2) 9/16" COMBINATION WRENCHES OR (2) 9/16" SOCKET SET

1. Remove the left chain guard using a 9/16" wrench (or socket set) before laying the End Gate on the spreader (**Figure 3.1**).
1. Using a punch and hammer, remove the two square punch-outs on each side of the spreader by sliding the tip of screwdriver into the slits of the punch-outs and pry out the punch-outs. These punch-outs are located along the top edge of the box of the spreader. (**Figure 3.2**).
2. Remove the plastic wrap covering the brackets and hardware on both ends of the support bar on the End Gate then remove the two bolts, nuts, and lockwashers from both brackets on the End Gate using a 9/16" wrench (or socket set).
3. Lay End Gate on spreader and line the holes in the brackets of the End Gate with the punched out holes on the spreader (this may require 2 people) (**Figure 3.2**).
4. Insert the bolts from the top side and then install the lockwashers and nuts from underneath. Once you have all 4 bolts in place, tighten down the nuts using a 9/16" wrench (or socket set) (**Figure 3.2**).
5. Once all 4 bolts are tightened securing the End Gate to the spreader, raise the End Gate and re-attach the left chain guard and secure with bolts, lockwashers and nuts using a 9/16" wrench (or socket set) (**Figure 3.3**).

KEEP HANDS CLEAR FROM EXPOSED CHAIN AND MOVING PARTS

REMOVE LEFT CHAIN GUARD USING 9/16" WRENCH BEFORE LAYING END GATE ON SPREADER

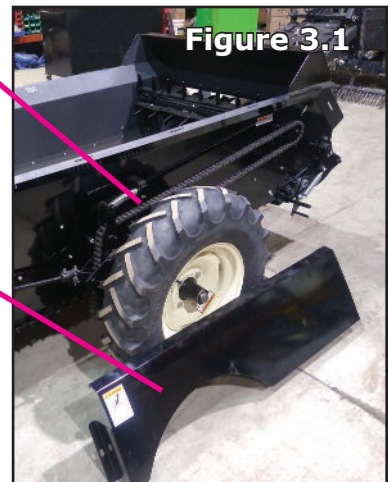


Figure 3.1

## NOTE:

REMOVE (2) PUNCH-OUTS WITH PUNCH AND HAMMER; INSERT THE BOLTS FROM THE TOP SIDE AND INSTALL THE LOCKWASHERS AND NUTS FROM UNDERNEATH; ONCE TIGHTENED RAISE THE END GATE TO RE-ATTACH LEFT CHAIN GUARD. (**FIGURE 45.2**).

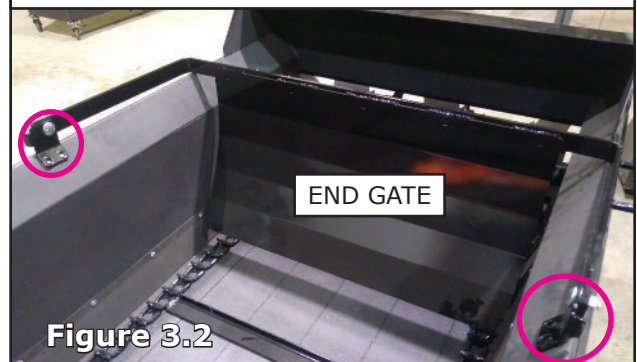


Figure 3.2



Figure 3.3

LOWER THE END GATE USING THE HANDLE TO AVOID DROPPING THE END GATE ONTO THE SIDE RAILS OF THE SPREADER

RE-ATTACH LEFT CHAIN GUARD TO MANURE SPREADER

## CONTACT INFORMATION:

ABI Attachments, Inc  
520 S. Byrkit Ave.  
Mishawaka, IN 46544

## CUSTOMER SUPPORT:

Phone: (877)788-7253  
Hours: Monday - Friday | 9AM - 5PM EST  
Email: [support@abiattachments.com](mailto:support@abiattachments.com)  
Web: [abisupport.com](http://abisupport.com)

For additional information on this equipment, or to order replacement parts, please contact our Customer Support Team at (877)788-7253 to speak with one of our representatives.

Additional support videos are available at the ABI Support Page under each tool.

Warranty and return policy information can also be found on the ABI Support Page under each tool. For additional questions regarding warranty or return policy, please contact our Customer Support Team at (877)788-7253 to speak with one of our representatives.

